

Permian Daily Fundamentals - Apr 21, 2026

Fundamentals Summary (MMcf/d)

	Today	D/D Δ	W/W Δ	M/M Δ	Y/Y Δ
Waha (fixed)	-	1.29	1.55	-1.64	-4.91
Production	24,095	(32)	93	787	1,539
Demand Required	2,991	16	(232)	(123)	(187)
Outflows	21,104	(48)	326	910	1,726

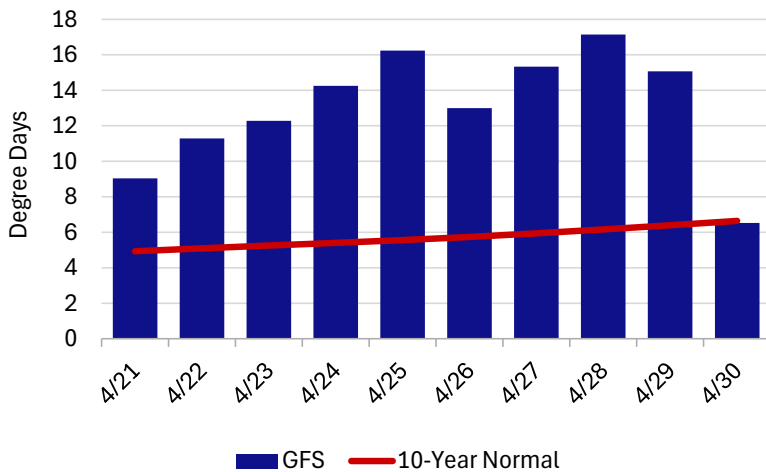
Flows					
	Today	D/D Δ	W/W Δ	M/M Δ	Y/Y Δ
Westbound	3,268	53	32	93	146
Northbound	1,588	11	(18)	(18)	100
Gulf Bound	3,209	94	(172)	(165)	(197)
Total	8,065	158	(158)	(90)	50

*Pricing data from General Index

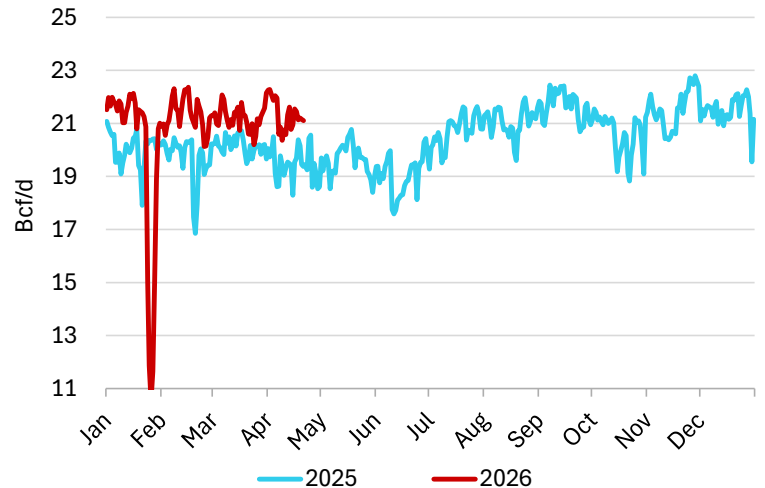
MNI Daily Highlights

- Fixed price Waha continued to strengthen yesterday, rising \$1.29/MMBtu. Prices remain negative outright, but less EPNG system maintenance has allowed for more production to leave the basin.
- Midland CDDs were revised higher overnight, with the region expected to be above normal through the end of the month. Sat/Sun will see the highest temps, with highs in the low 90s, which may provide some additional cooling demand.
- Permian production held mostly flat overnight, reaching 24.1 Bcf/d today. Volumes remain below the YTD average, and may decline today with EPNG maintenance on the North ML.
- Outflows are up 158 MMcf/d overnight, with all corridors reporting increases. PHP flows are up 78 MMcf/d, NNG is up 33 MMcf, and Transwestern is up 52 MMcf/d.
- The GCX expansion is expected this quarter, but the flow sample shows volumes have been roughly half the normal level for the last week.

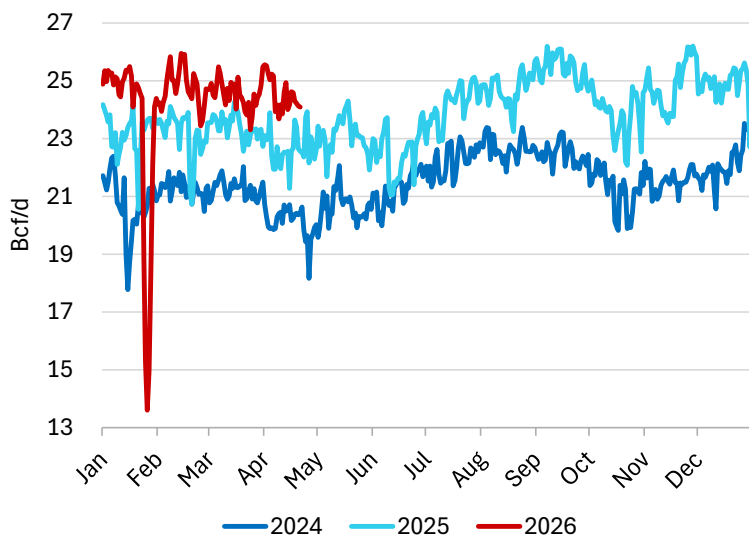
Midland CDD Forecasts



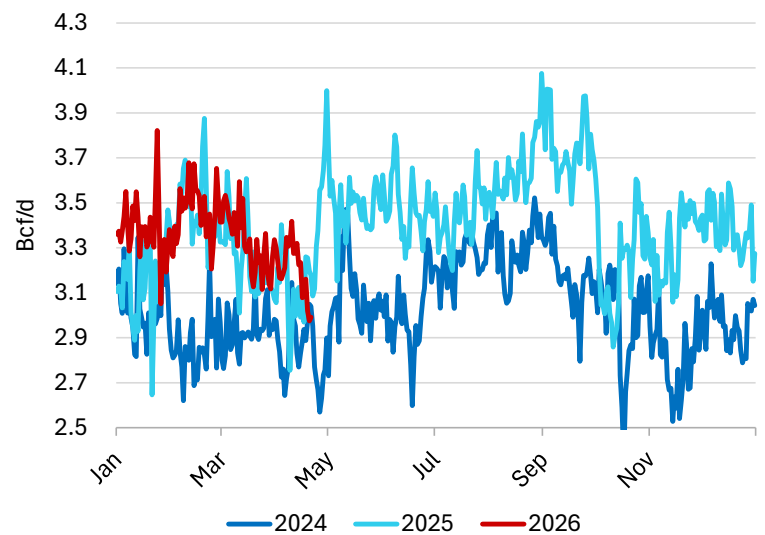
Permian Estimated Required Outflows



Permian Dry Gas Production Estimate

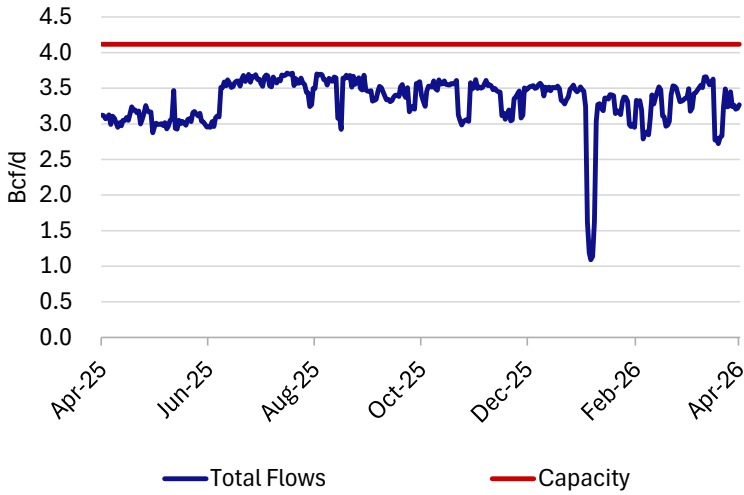


Permian In-Basin Demand Estimate

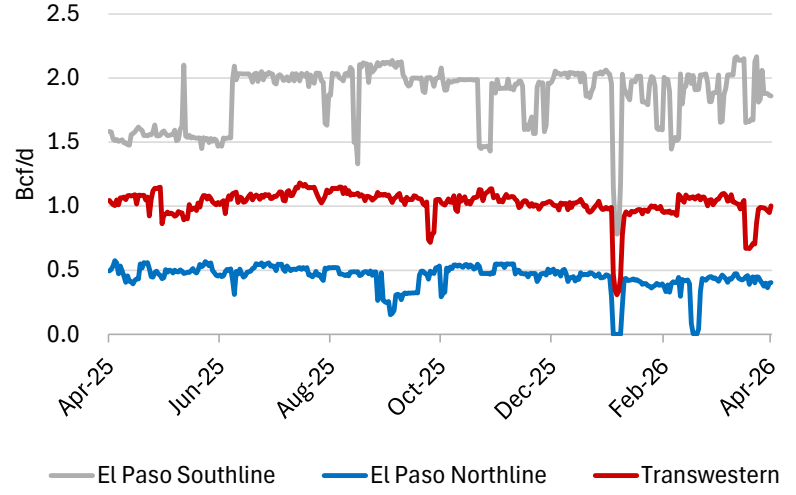


Permian Pipeline Flows by Pipeline and Corridor

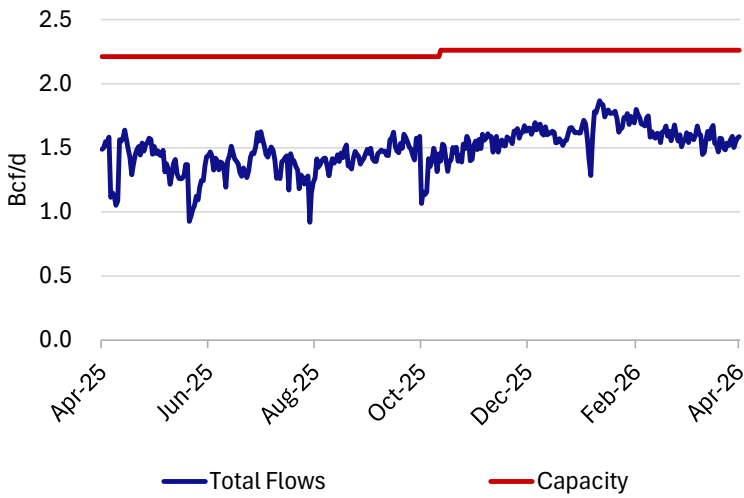
Westbound Flows



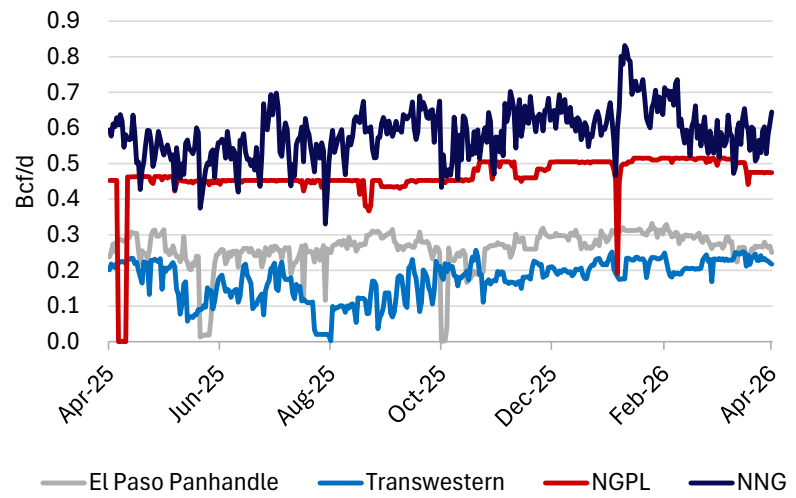
Westbound Flows by Pipeline Segment



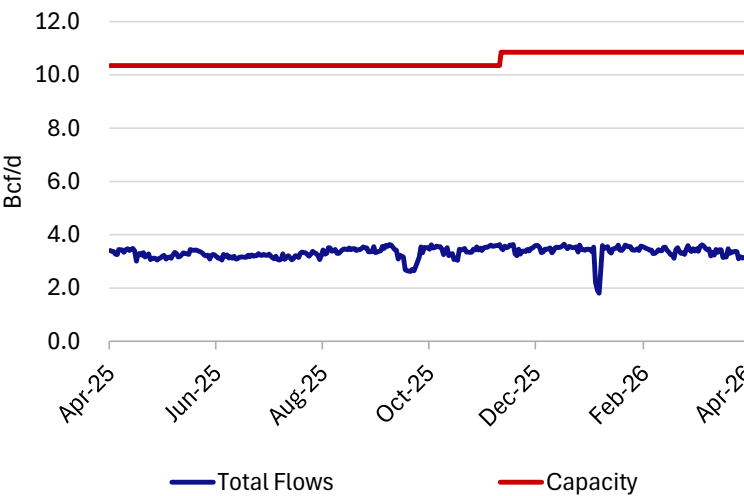
Northbound Flows



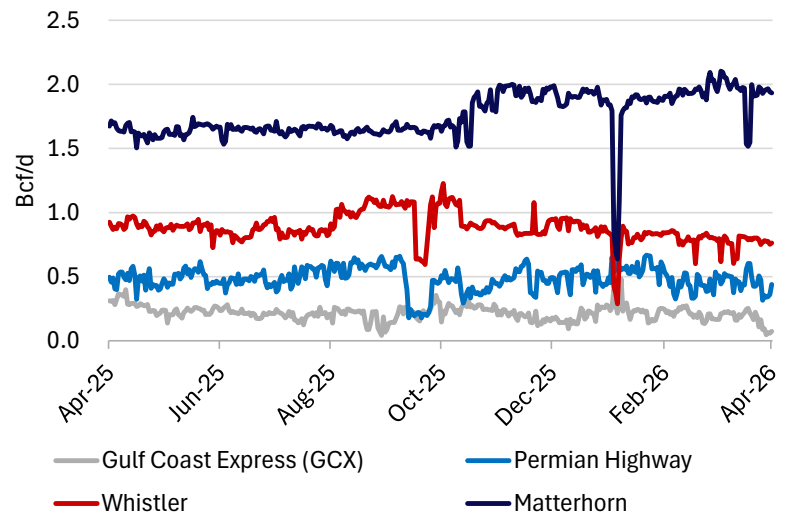
Northbound Flows by Pipeline Segment



Gulf bound Flows



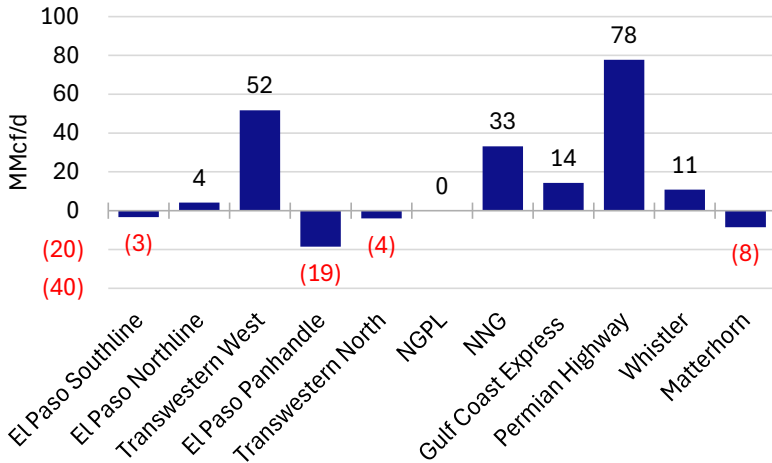
Gulf bound Flows by Pipeline



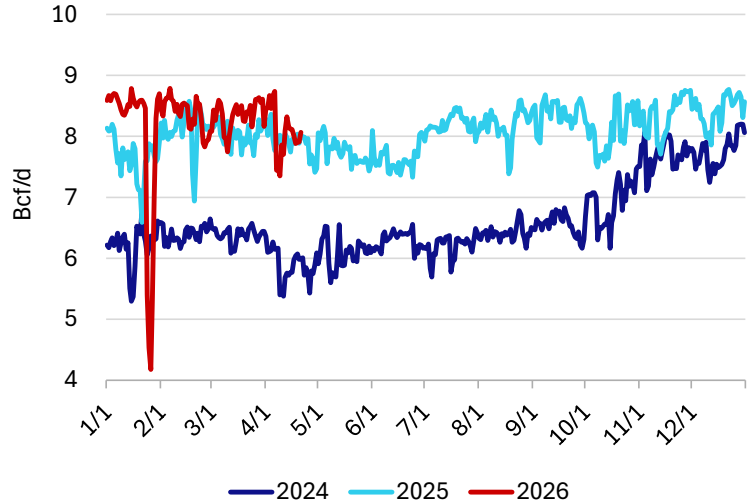
Note: Gulf bound pipelines are mostly intrastates and daily nomination visibility is limited.

Permian Daily Fundamentals - Apr 21, 2026

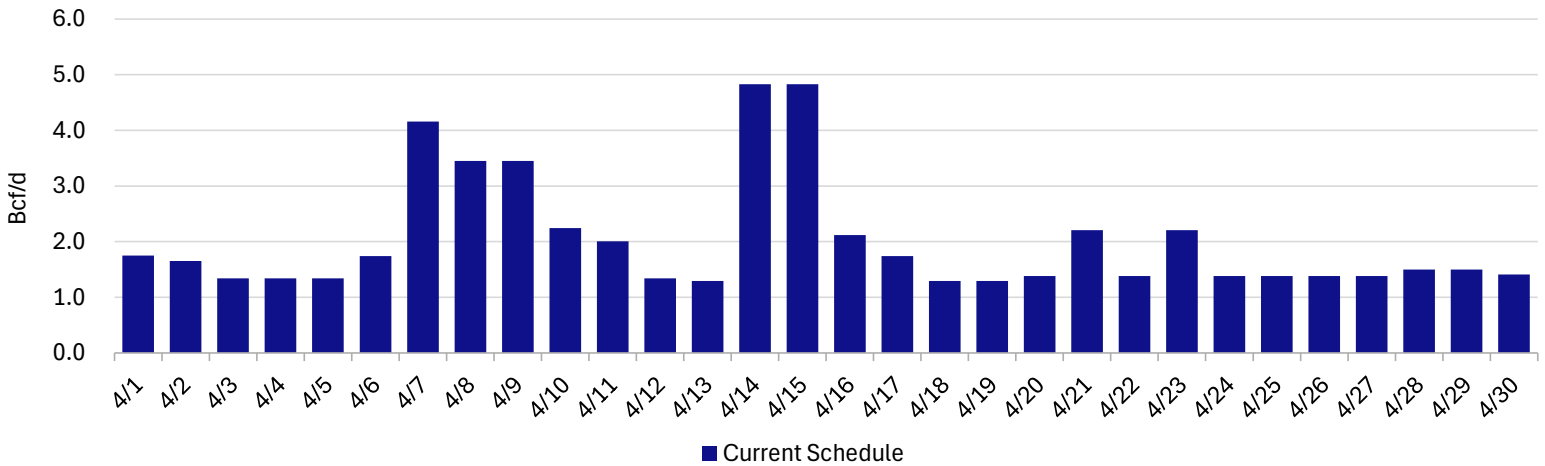
Permian Outflows by Pipeline Day-over-Day Change



Total Permian Pipeline Outflows



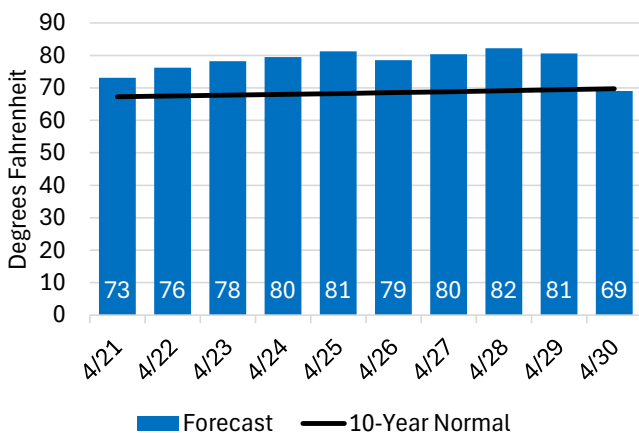
El Paso Scheduled Maintenance - April 2026



Note: Represents outages across the entire pipeline system

Updated: 03/30/2026

Daily Avg. Temperature FX vs. Historical



Notable El Paso Outages for April

- Apr. 1-30 Plains Station: repairs across station, outage 405 MMcf/d
- Apr. 6-9 North ML: Hackberry 2A maintenance, outage 401 MMcf/d
- Apr. 7-9 PUC Waha/Waha GE: Waha Station DOT/ESD test, outage 600 MMcf/d
- Apr. 7 Bondad Station: DOT/ESD test, outage 726 MMcf/d
- Apr. 7-11: Line 1103 maintenance, outage 666 MMcf/d
- Apr. 14-15 Lordsburg C: Line 2000 smart tool Casa Grande to Ehrenberg, outage 228 MMcf/d
- Apr. 14-15: Line 2000 smart tool Casa Grande to Ehrenberg - North Baja delivery - customer limited to CADIZSOU Line 1903, outage 443 MMcf/d
- Apr. 21 North ML: Line 1201 cleaning tool Valve City to Navajo, outage 822 MMcf/d
- Apr. 23 North ML: Line 1201 smart tool Valve City to Navajo, outage 822 MMcf/d

Updated: 03/30/2026