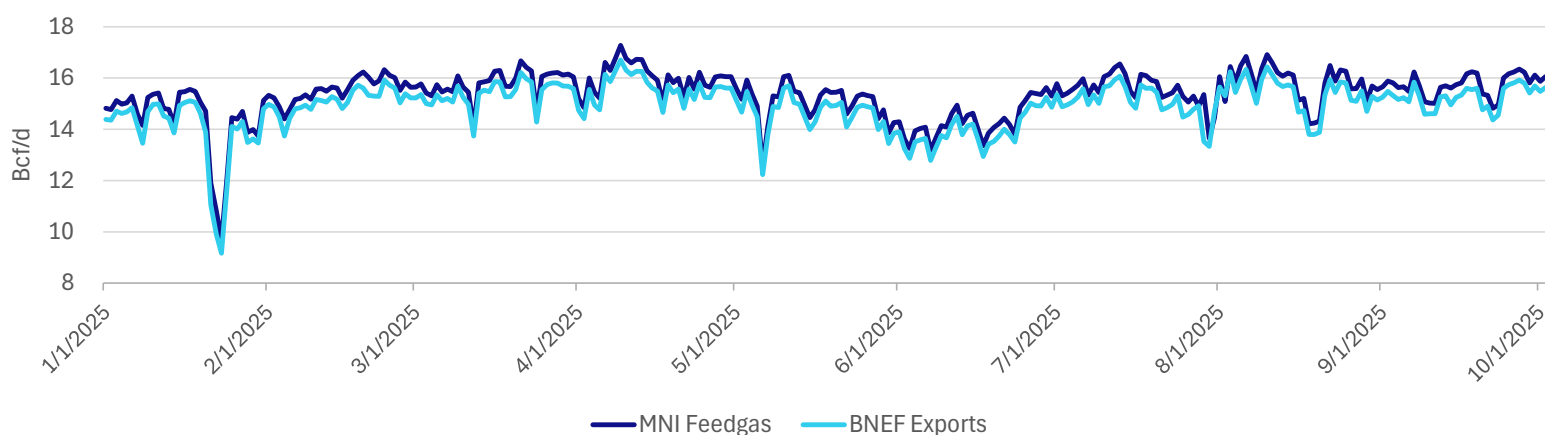


US LNG Weekly Recap - Week of 10/03/2025

Weekly Highlights for Prior Two Weeks

- **Port Arthur Phase 2:** Reached positive FID on September 24th. The 13 MTPA (1.7 Bcf/d) facility includes 2 trains, with train 3 expected to begin commercial operations in 2030 and train 4 in 2031. FERC filings show the construction began in September.
- **Plaquemines:** Approved to commission block 17 with nitrogen gas, construction inspection report states block 15 construction is complete and nearly ready for commissioning, and received approval for hazardous fluids into phase 2 injection systems.
- **Rio Grande:** Requested approval to install feed gas heaters on trains 1, 2, and 3, indicating early phases of construction continues.
- **Corpus Christi Stage 3:** Latest construction report states construction is ~90% complete, with train 2 at substantial completion. Substantial completion of all trains is expected within the next few months. Approved to introduce propane into the thermal oxidizer and hot oil furnace into train 4, suggesting the first 4 trains are moving toward commissioning stages.
- **Golden Pass:** Construction report states introduction of nitrogen into Train 1, suggesting commissioning phase of train 1 is starting
- **Commonwealth:** Requested extension of in-service deadline to December 31, 2031 from the current authorization of November 17, 2027.
- **CP2:** The LNG facility is in early construction phase, while CP Express pipeline is in pre-construction phase. Inspection reports stated facility construction was to commence within the week following the inspection which was in mid-September.

Daily L48 LNG Feedgas Total



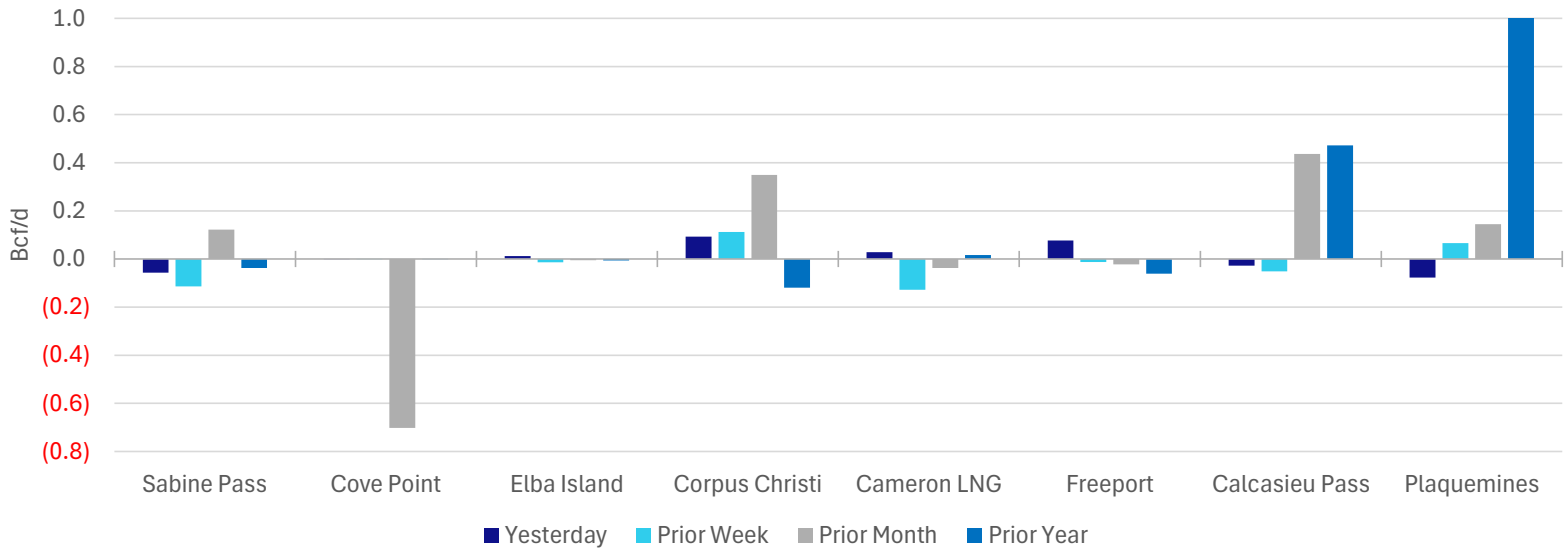
Absolute Feedgas Volume by Facility (Bcf/d)

	Sabine Pass	Cove Point	Elba Island	Corpus Christi	Cameron LNG	Freeport	Calcasieu Pass	Plaquemines	Golden Pass	Total
Today	4.59	0.01	0.36	2.01	2.04	1.90	1.71	3.48	0.00	16.10
Yesterday	4.65	0.02	0.35	1.92	2.01	1.82	1.74	3.56	0.00	16.05
Prior Week	4.70	0.02	0.37	1.90	2.16	1.91	1.76	3.41	0.00	16.24
Prior Month	4.47	0.72	0.36	1.66	2.07	1.92	1.28	3.33	0.00	15.81
Prior Year	4.63	0.02	0.37	2.13	2.02	1.96	1.24	0.03	0.00	12.38

Change in Feedgas from Today (Bcf/d)

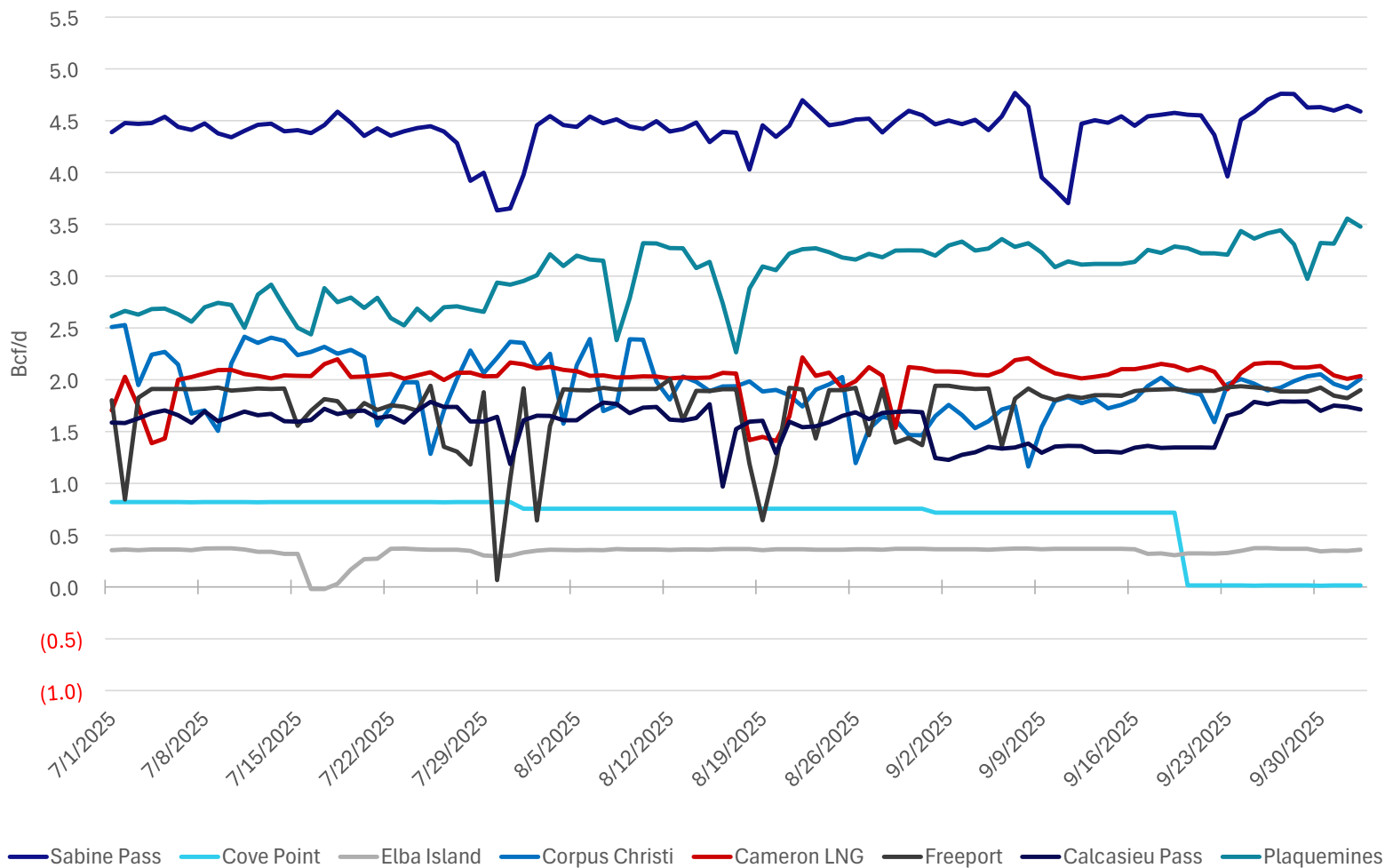
	Sabine Pass	Cove Point	Elba Island	Corpus Christi	Cameron LNG	Freeport	Calcasieu Pass	Plaquemines	Golden Pass	Total
Yesterday	(0.06)	(0.00)	0.01	0.09	0.03	0.08	(0.03)	(0.08)	0.00	0.05
Prior Week	(0.11)	(0.00)	(0.01)	0.11	(0.13)	(0.01)	(0.05)	0.07	0.00	(0.14)
Prior Month	0.12	(0.70)	(0.00)	0.35	(0.04)	(0.02)	0.44	0.14	0.00	0.29
Prior Year	(0.04)	(0.00)	(0.01)	(0.12)	0.02	(0.06)	0.47	3.45	0.00	3.72

Change in Feedgas Deliveries by Facility

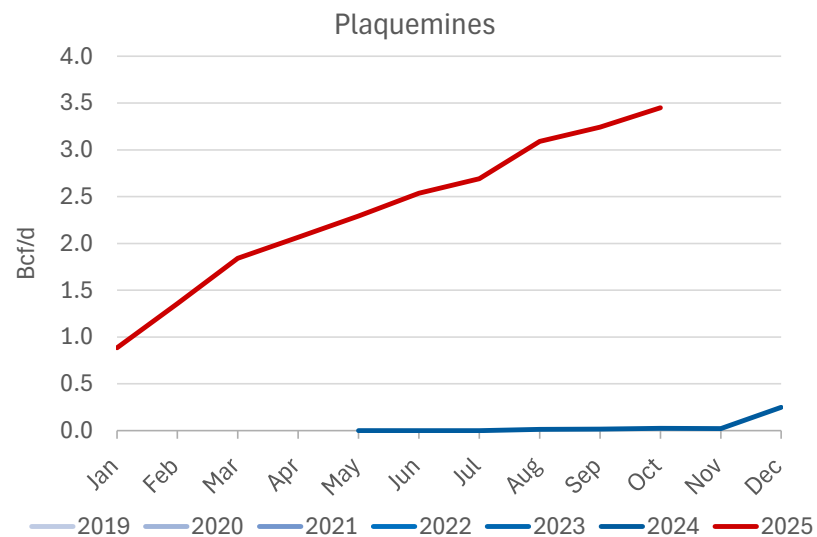
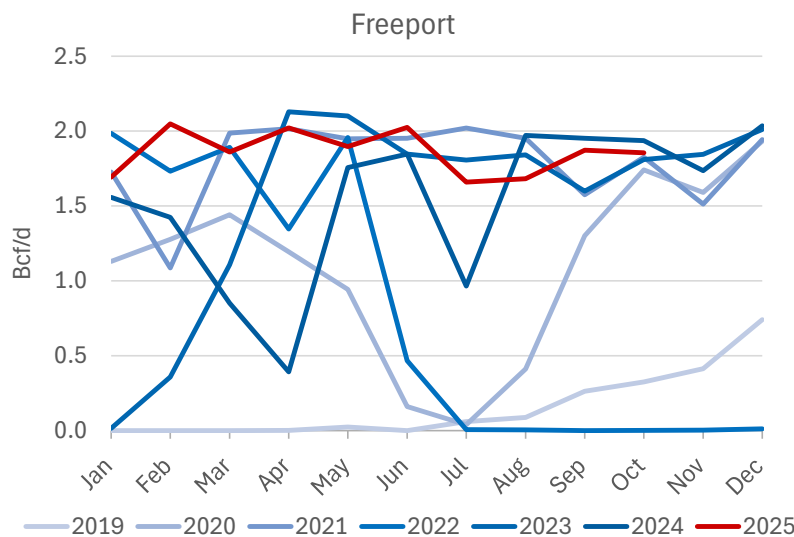
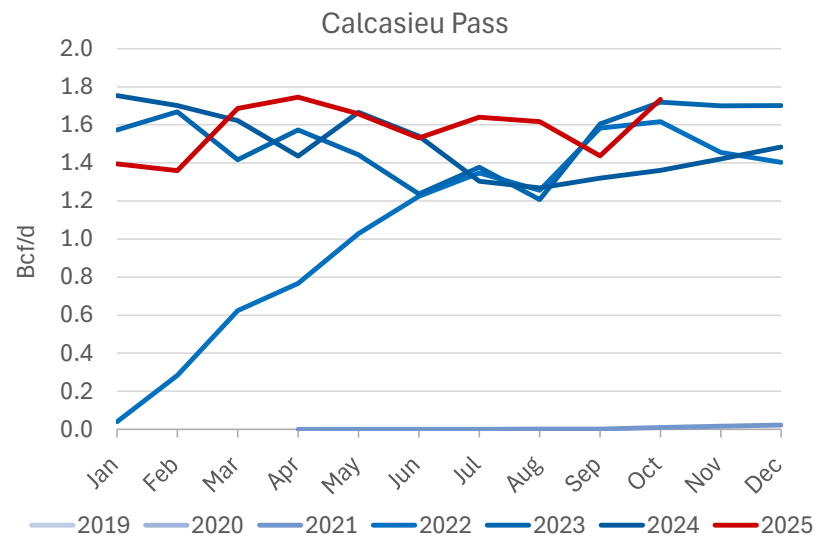
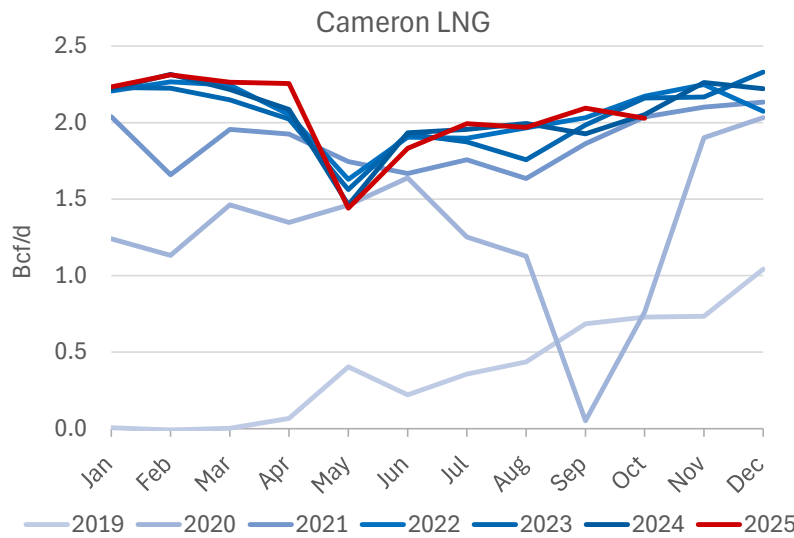
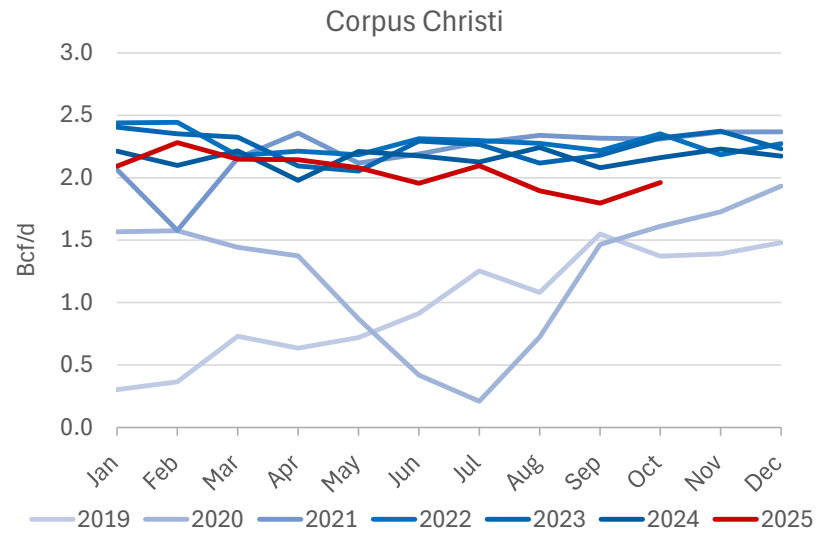
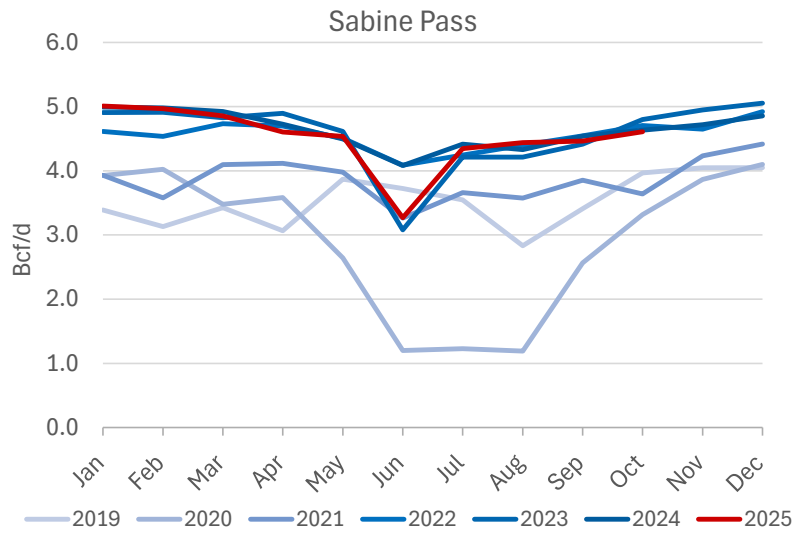


Note: Chart axis is truncated for visualization. Plaquemines prior year comparison exceeds chart axis.

Daily LNG Feedgas Deliveries by Facility - Prior 3 Months



Monthly Average Feedgas Flows by Facility



Monthly Average Feedgas Flows by Facility

