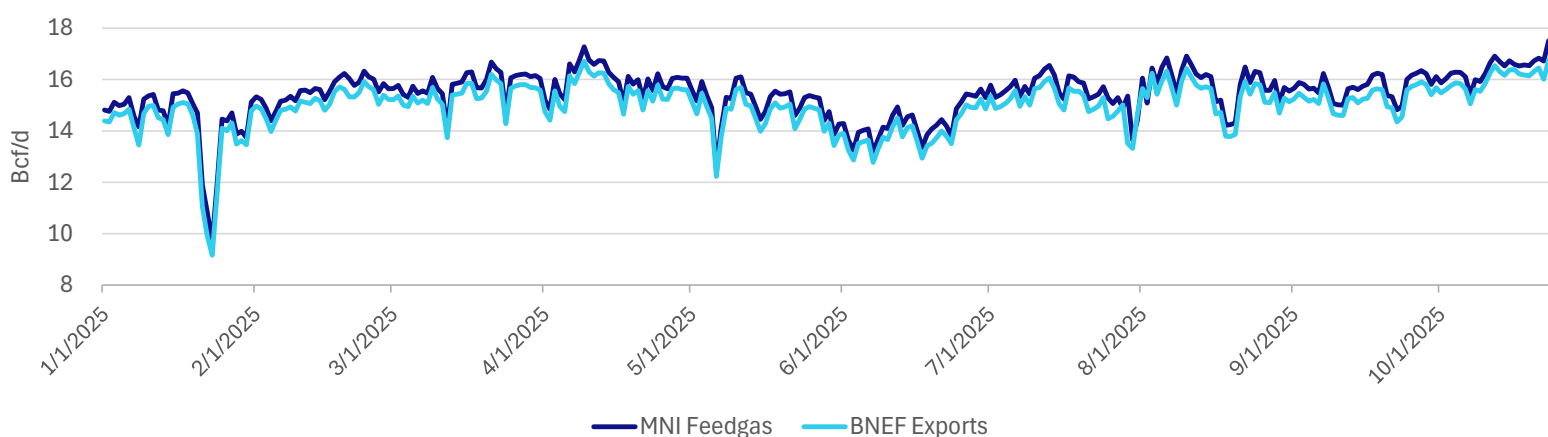


## US LNG Weekly Recap - Week of 10/24/2025

## Weekly Highlights

- **Corpus Christi Stage 3:** Received approval to introduce feed gas to warm Midscale Train 4, kicking off commissioning activities. Stage 3 trains 1 and 2 already reached substantial completion, and a third train is expected to reach substantial completion by year end. Substantial completion occurs just before start-up activities such as cool down for the train.
- **Plaquemines:** Submitted plan to introduce hazardous fluids into Block 17 and received approval to do so. Block 17 is the last of the 18-block facility to receive this approval. All of the remaining blocks should now be in the final stages of commissioning and moving towards start-up phases. Watching for upcoming filings for approval to initiate cool-down operations on the remaining blocks.
- **Calcasieu Pass Phase 2:**
  - DOE approved CP2's request for non-FTA export approval.
  - Filed a variance request for drilling operations across 5 locations for CP Express pipeline due to some geological developments in the drilling process. If approved, the variance should allow for the pipeline development to stay on schedule.
- **Alaska LNG:** Tokyo Gas signed letter of intent with Glenfarne for 1 MTPA (~130 MMcf/d). Facility is targeting FID by year end.

Daily L48 LNG Feedgas Total



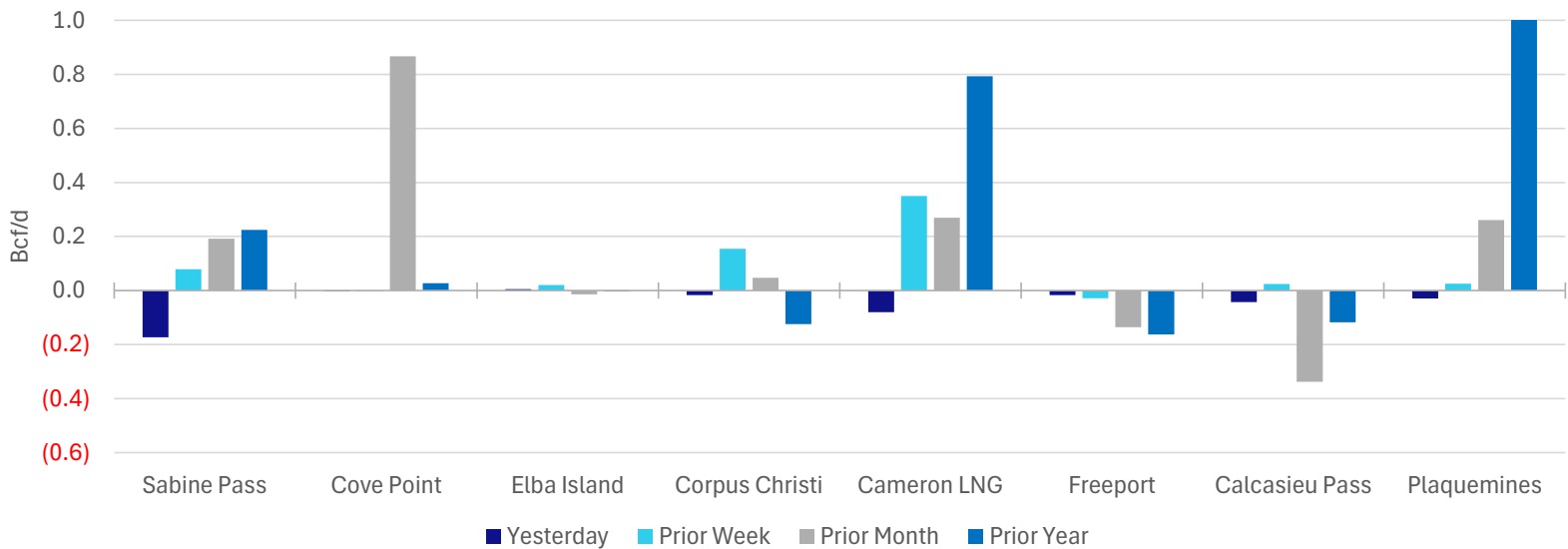
## Absolute Feedgas Volume by Facility (Bcf/d)

	Sabine Pass	Cove Point	Elba Island	Corpus Christi	Cameron LNG	Freeport	Calcasieu Pass	Plaquemines	Golden Pass	Total
Today	4.70	0.88	0.33	2.05	2.33	1.80	1.35	3.70	0.00	17.15
Yesterday	4.87	0.88	0.33	2.07	2.41	1.82	1.39	3.73	0.00	17.51
Prior Week	4.62	0.88	0.31	1.90	1.98	1.83	1.33	3.67	0.00	16.53
Prior Month	4.51	0.02	0.35	2.01	2.06	1.94	1.69	3.44	0.00	16.00
Prior Year	4.48	0.85	0.34	2.18	1.54	1.96	1.47	0.03	0.00	12.85
30-day Avg.	4.65	0.38	0.35	2.02	2.04	1.82	1.61	3.53	0.00	16.39

## Change in Feedgas from Today (Bcf/d)

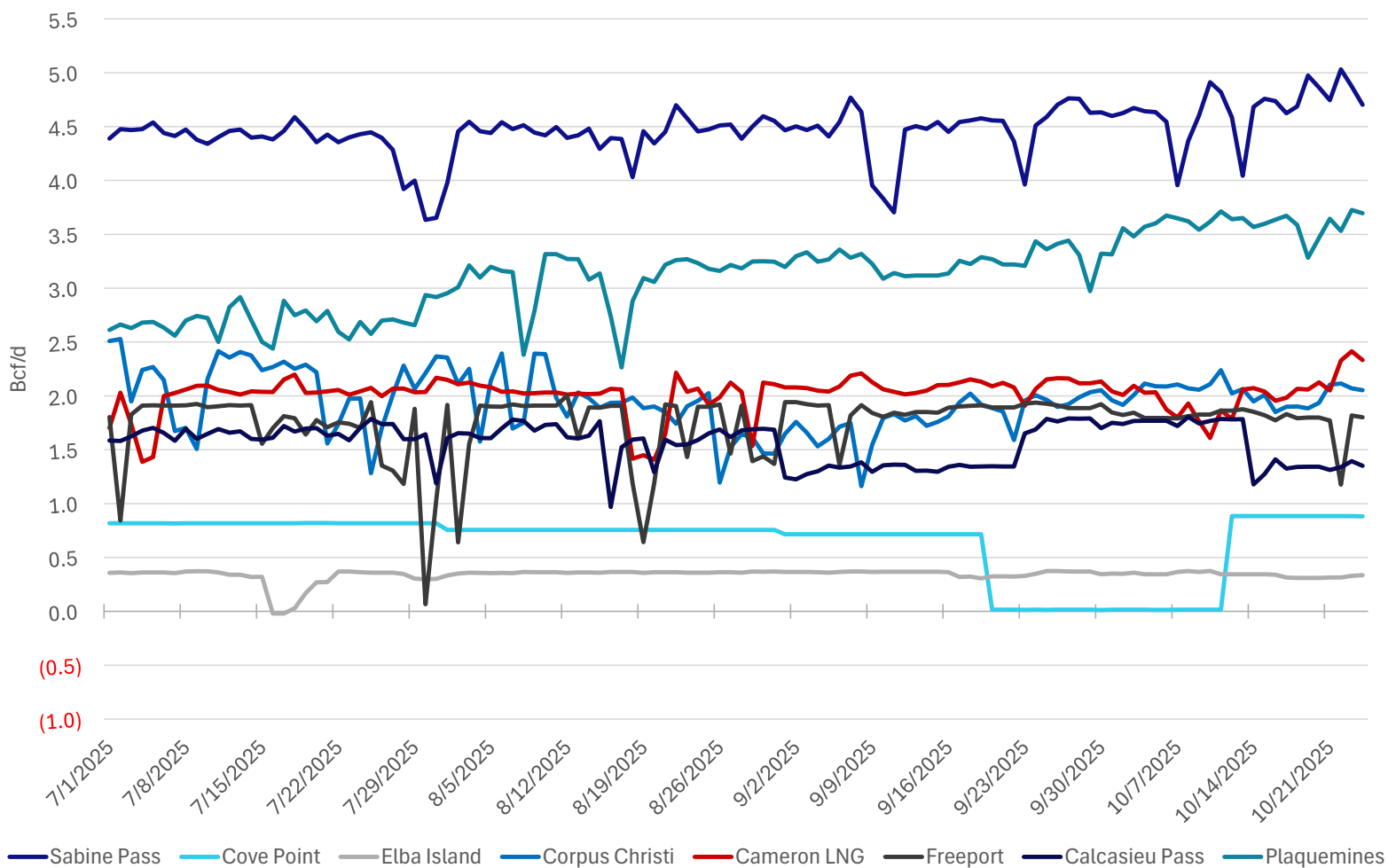
	Sabine Pass	Cove Point	Elba Island	Corpus Christi	Cameron LNG	Freeport	Calcasieu Pass	Plaquemines	Golden Pass	Total
Yesterday	(0.17)	(0.00)	0.01	(0.02)	(0.08)	(0.02)	(0.04)	(0.03)	0.00	(0.36)
Prior Week	0.08	(0.00)	0.02	0.15	0.35	(0.03)	0.02	0.02	0.00	0.62
Prior Month	0.19	0.87	(0.01)	0.05	0.27	(0.14)	(0.34)	0.26	0.00	1.15
Prior Year	0.22	0.03	(0.00)	(0.12)	0.79	(0.16)	(0.12)	3.66	0.00	4.30
30-day Avg.	0.05	0.50	(0.01)	0.04	0.29	(0.02)	(0.26)	0.17	0.00	0.77

Change in Feedgas Deliveries by Facility

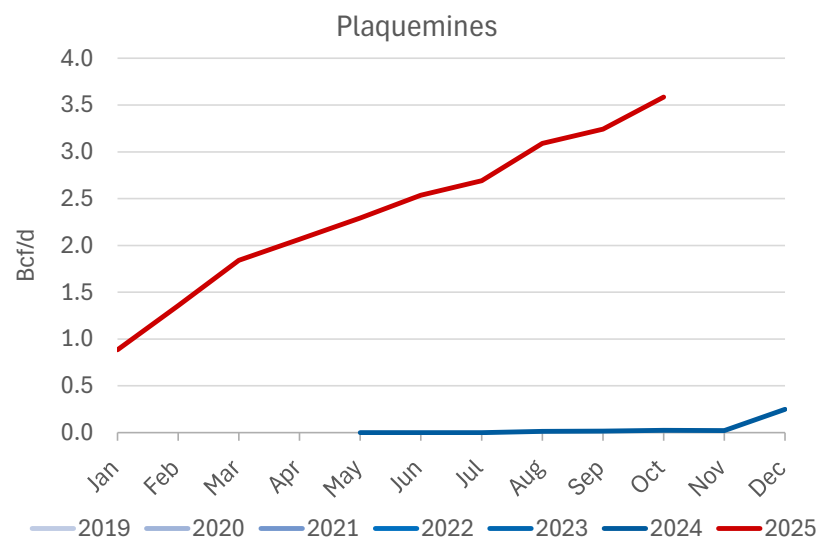
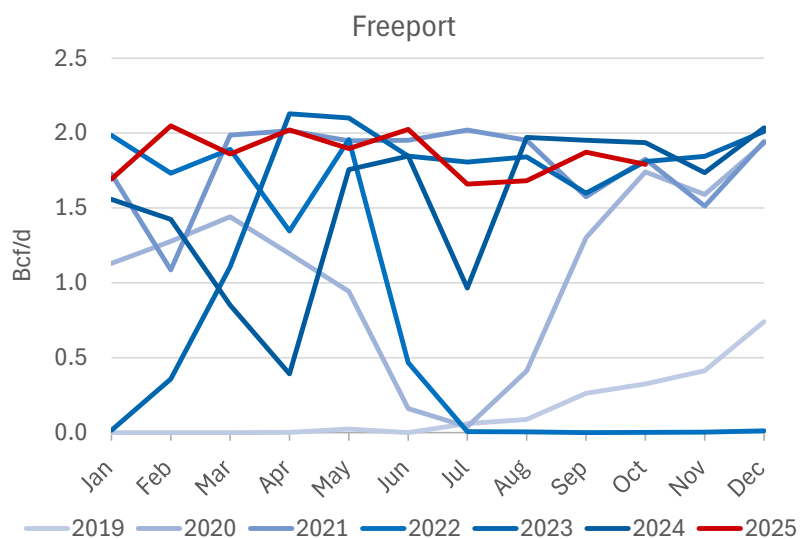
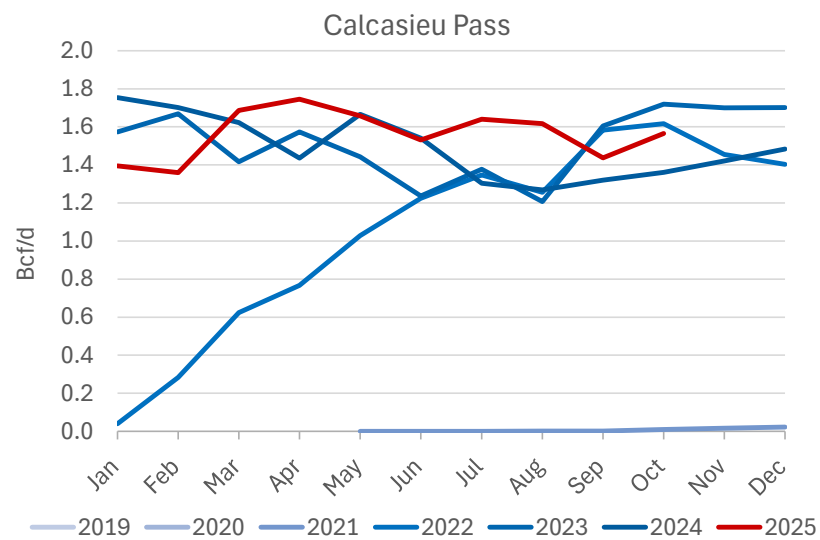
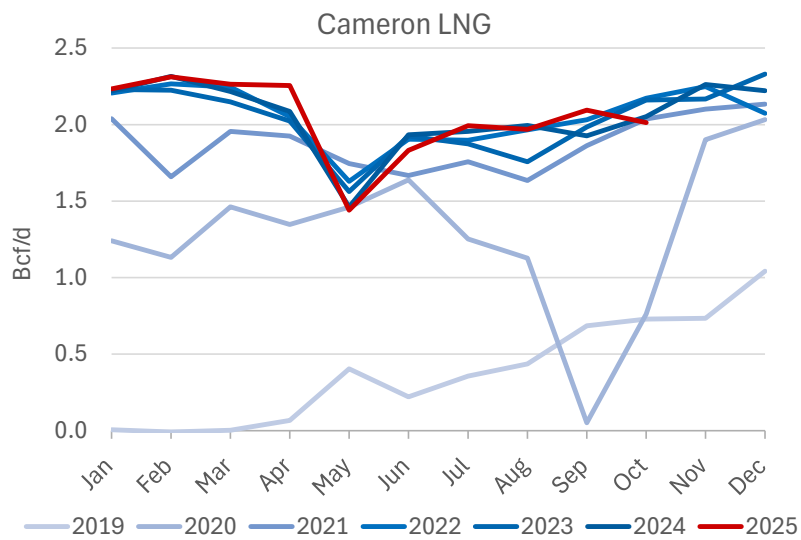
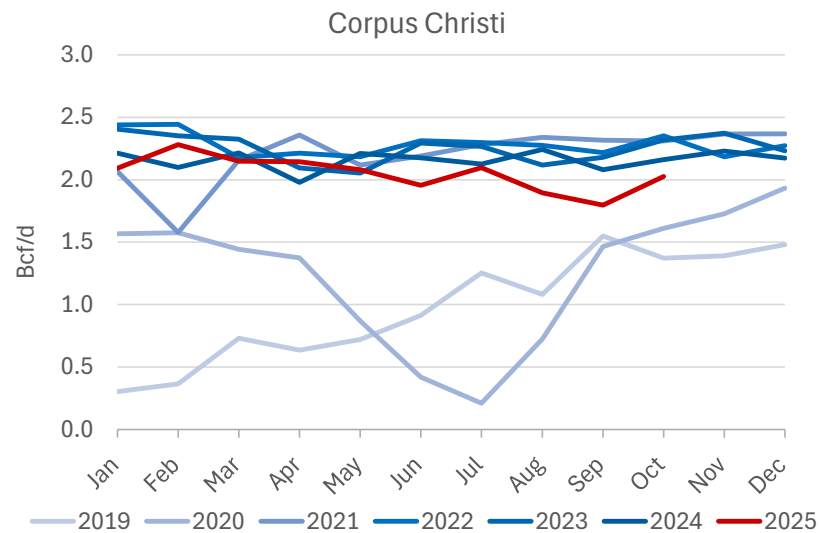
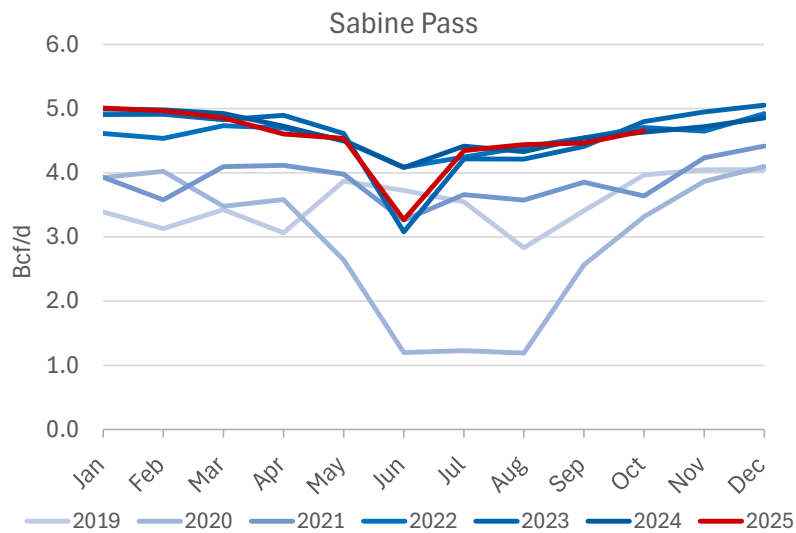


Note: Chart axis is truncated for visualization. Plaquemines prior year comparison exceeds chart axis.

Daily LNG Feedgas Deliveries by Facility - Prior 3 Months



Monthly Average Feedgas Flows by Facility



Monthly Average Feedgas Flows by Facility

