

## US LNG Weekly Recap - Week of 01/09/2026

### Weekly Highlights

**Golden Pass:** The latest construction report for the period of Dec 1st-15th shows the facility continues to install structural steel and piping for Trains 2 and 3 and that commissioning activities for the marine systems are in progress. The brownfield area was ready for their cool down cargo. Train 1 is guided to make first LNG next month and the report states the HRSG cleaning and commission are ongoing.

**CC Stage 3:** Stage 3 reported as 93% complete, and Trains 8&9 at 29.7% complete. Work continues on Trains 4-7, with all trains having ongoing work on foundation development and steel and piping installation ongoing.

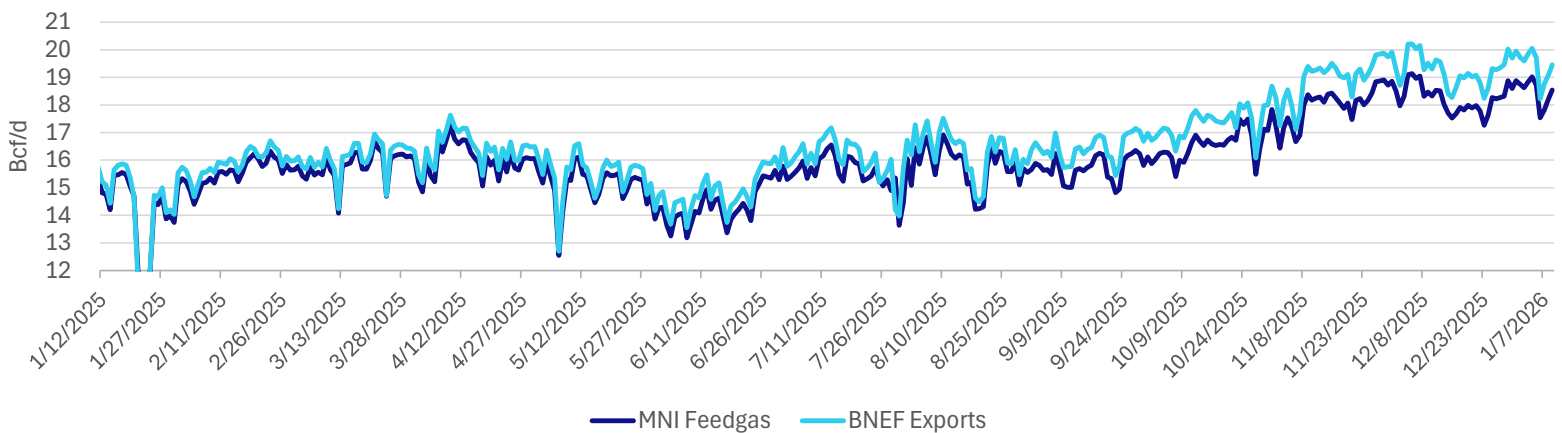
**Plaquemines:** Construction continues to be focused on Power Island Phase 2. They note expectations to complete mechanical installation of P phase 2 in the next reporting period (January). The facility needs this to be complete to consistently maintain its higher levels of LNG production.

**CP2:** Very early construction continues, with the project starting to pour foundations for the LNG tanks and installing the storm surge wall. CP Express construction is ongoing, with the Moss Lake compressor station focusing on storm surge wall pipe and sheet pile installation.

**Louisiana LNG:** As of the December report, construction is in line with the project schedule, with ongoing civil, marine, and foundational activities, including continued advancement of LNG Tanks 1 and 2. Report shows the tanks are starting to show tank wall construction.

**Rio Grande:** Early construction activities are ongoing, but the latest inspection report states construction had not started on Rio Bravo Pipeline.

Daily L48 LNG Feedgas Total



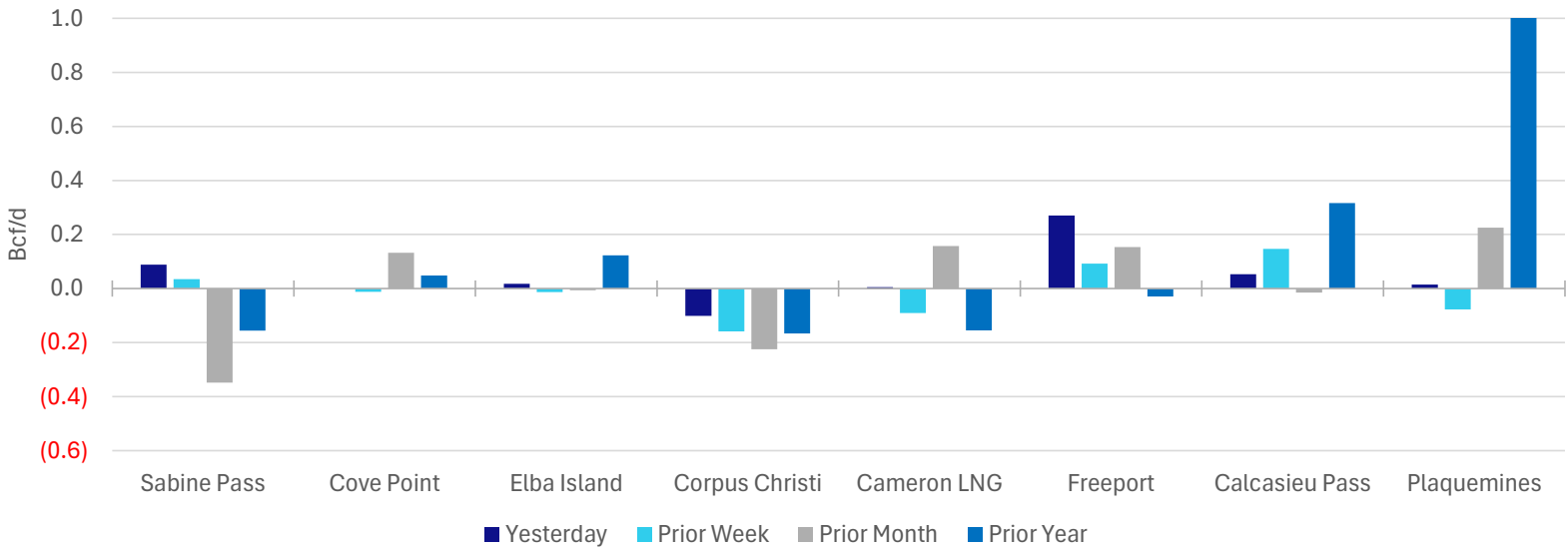
### Absolute Feedgas Volume by Facility (Bcf/d)

	Sabine Pass	Cove Point	Elba Island	Corpus Christi	Cameron LNG	Freeport	Calcasieu Pass	Plaquemines	Golden Pass	Total
Today	4.86	0.91	0.36	2.20	2.13	2.07	1.83	4.18	0.00	18.54
Yesterday	4.77	0.91	0.35	2.30	2.13	1.80	1.78	4.17	0.00	18.20
Prior Week	4.83	0.92	0.38	2.35	2.22	1.98	1.68	4.26	0.00	18.62
Prior Month	5.21	0.78	0.37	2.42	1.97	1.91	1.85	3.96	0.00	18.47
Prior Year	5.02	0.86	0.24	2.36	2.29	2.10	1.51	0.86	0.00	15.24
30-day Avg.	4.98	0.87	0.31	2.37	2.11	1.83	1.69	4.03	0.00	18.19

### Change in Feedgas from Today (Bcf/d)

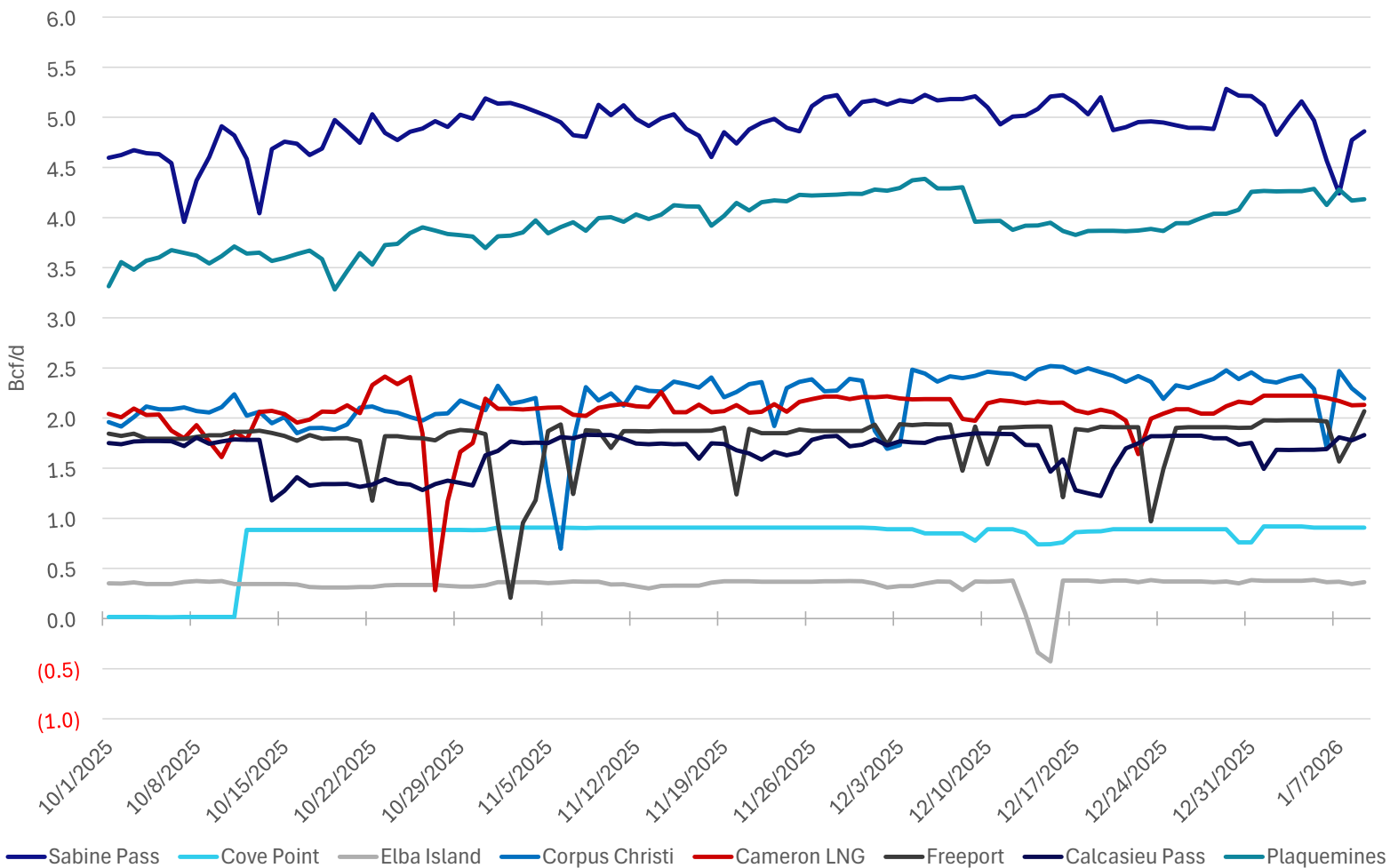
	Sabine Pass	Cove Point	Elba Island	Corpus Christi	Cameron LNG	Freeport	Calcasieu Pass	Plaquemines	Golden Pass	Total
Yesterday	0.09	0.00	0.02	(0.10)	0.01	0.27	0.05	0.01	0.00	0.35
Prior Week	0.04	(0.01)	(0.01)	(0.16)	(0.09)	0.09	0.15	(0.08)	0.00	(0.08)
Prior Month	(0.35)	0.13	(0.01)	(0.22)	0.16	0.15	(0.01)	0.23	0.00	0.07
Prior Year	(0.16)	0.05	0.12	(0.17)	(0.16)	(0.03)	0.32	3.32	0.00	3.30
30-day Avg.	(0.12)	0.04	0.05	(0.18)	0.02	0.24	0.15	0.16	0.00	0.35

Change in Feedgas Deliveries by Facility

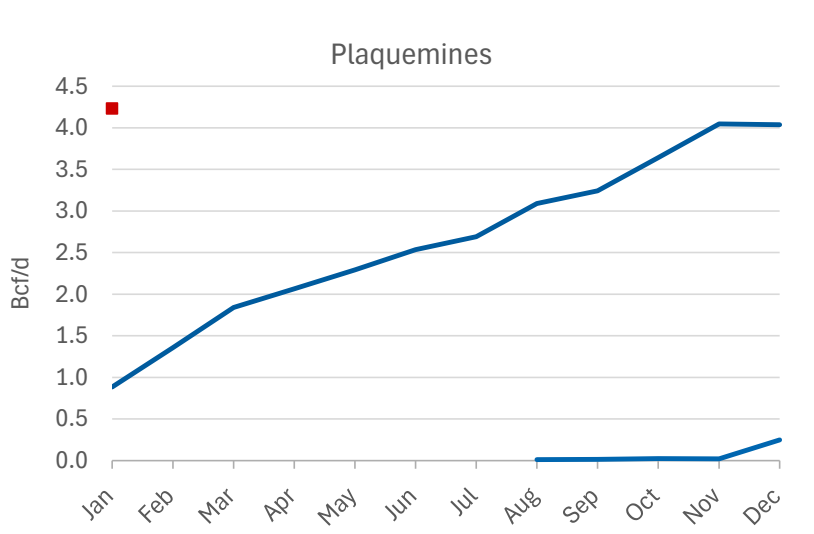
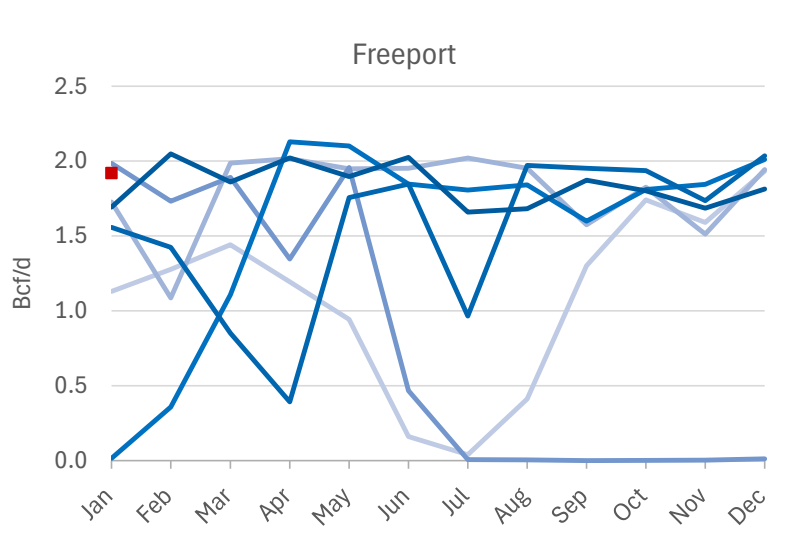
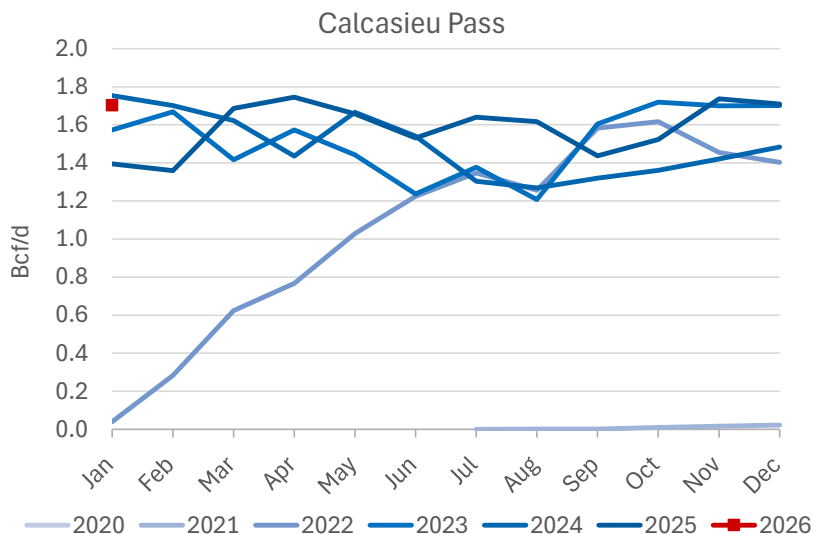
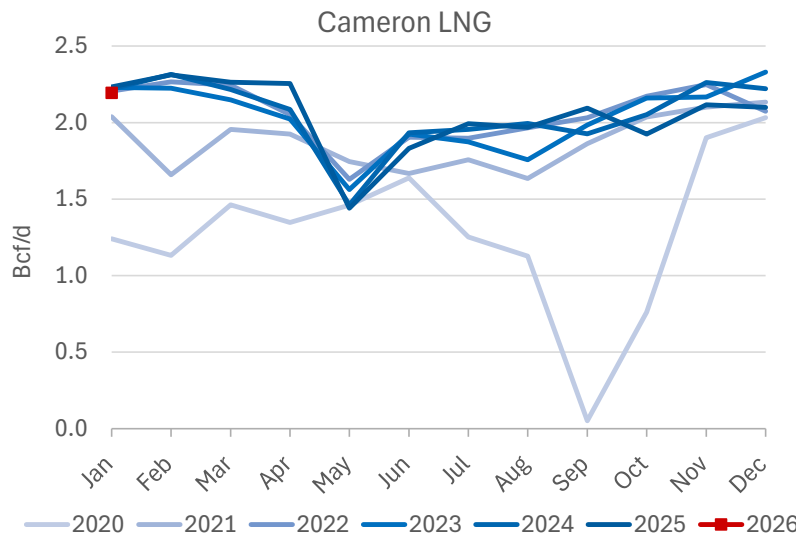
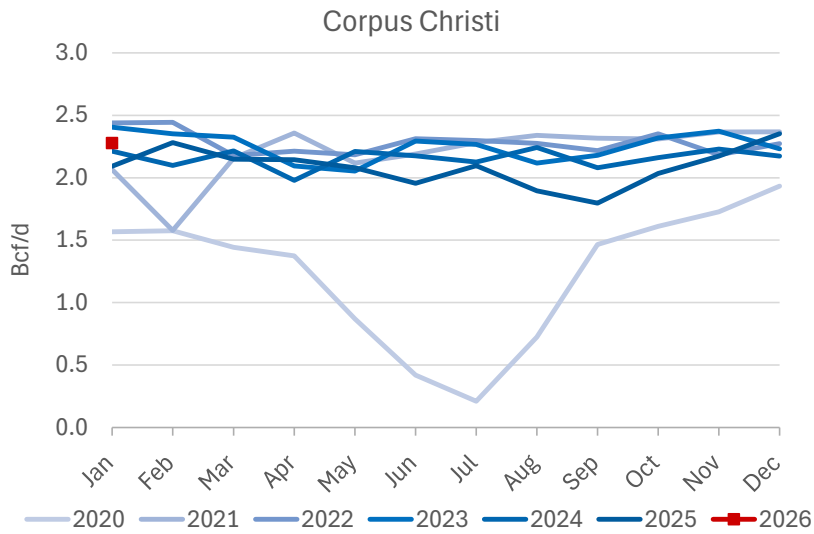
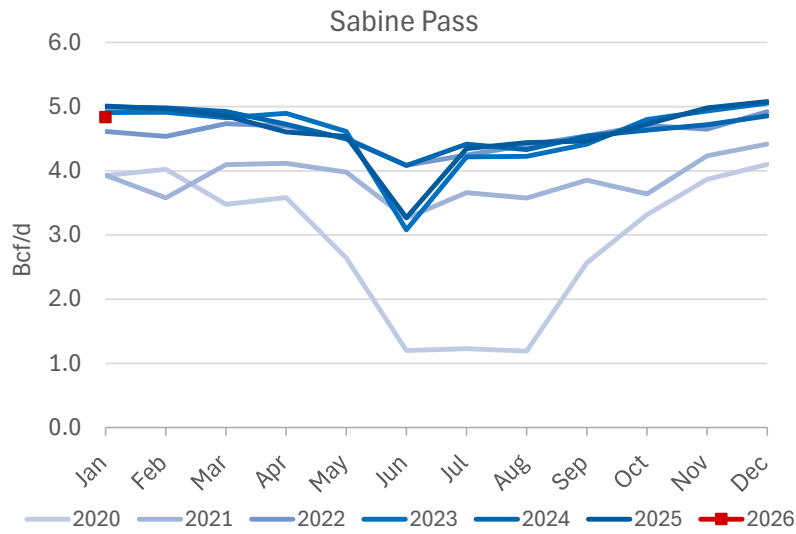


Note: Chart axis is truncated for visualization. Plaquemines prior year comparison exceeds chart axis.

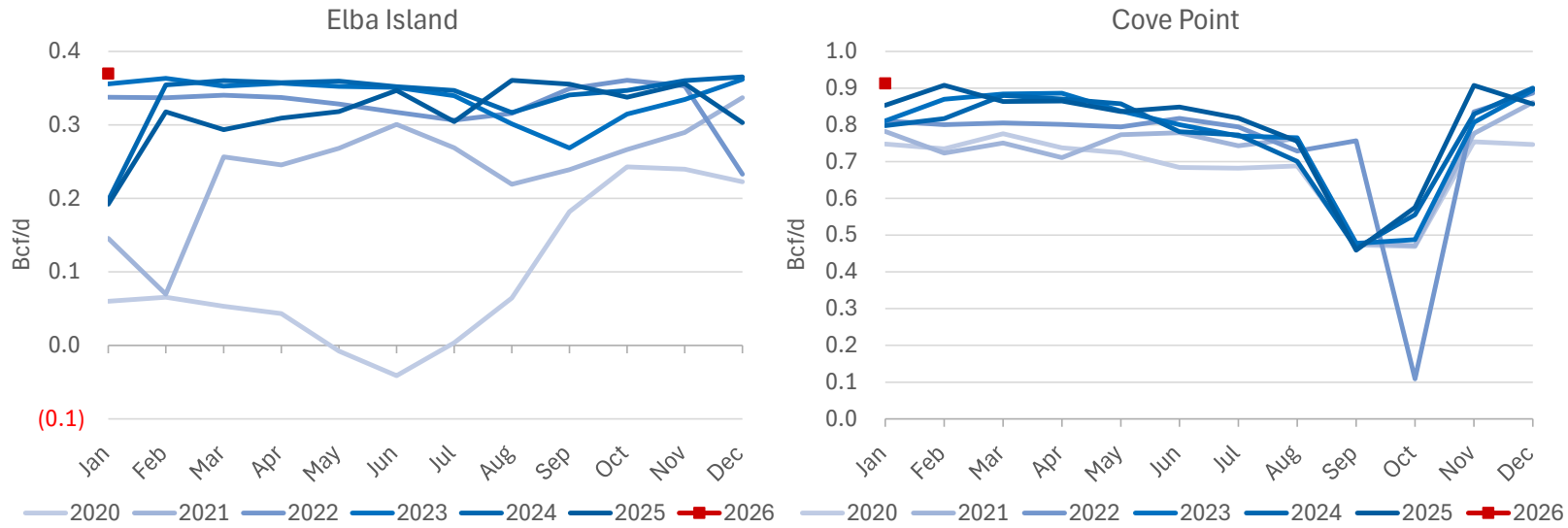
Daily LNG Feedgas Deliveries by Facility - Prior 3 Months



Monthly Average Feedgas Flows by Facility



Monthly Average Feedgas Flows by Facility



US LNG Facility Tracker

Project Status	Facility	Project Stage	Estimated ISD	Capacity Bcf/d
Under Construction	Corpus Christi Stage 3	Trains 1-7	2025	1.59
Under Construction	Corpus Christi Expansion	Trains 8-9	2029	0.40
Under Construction	CP2	CP2	2027	3.96
Under Construction	Golden Pass	Trains 1-3	2026-2027	2.58
Under Construction	Louisiana LNG	Trains 1-3	2029	2.33
Under Construction	Port Athur Phase 1	Trains 1-2	2027	1.91
Under Construction	Port Athur Phase 2	Trains 3-6	2030	1.91
Under Construction	Rio Grande	Train 1-5	2027-2031	3.95
Pending FID	Plaquemines Phase 2	Trains 1-36	2030	4.00
Pending FID	Alaska LNG		--	2.55
Pending FID	Commonwealth		2029	1.21
Pending FID	Delfin		--	1.80
Pending FID	Gulf LNG		--	1.53
Pending FID	Lake Charles		--	2.33
Pending FID	Texas LNG		--	0.56
Pending FID	Cameron	Train 4	--	--
Pending FID	Rio Grande	Trains 6-8	--	2.37
Proposed	Sabine	Trains 7-9	--	2.37
Proposed	ST LNG		2029	1.11