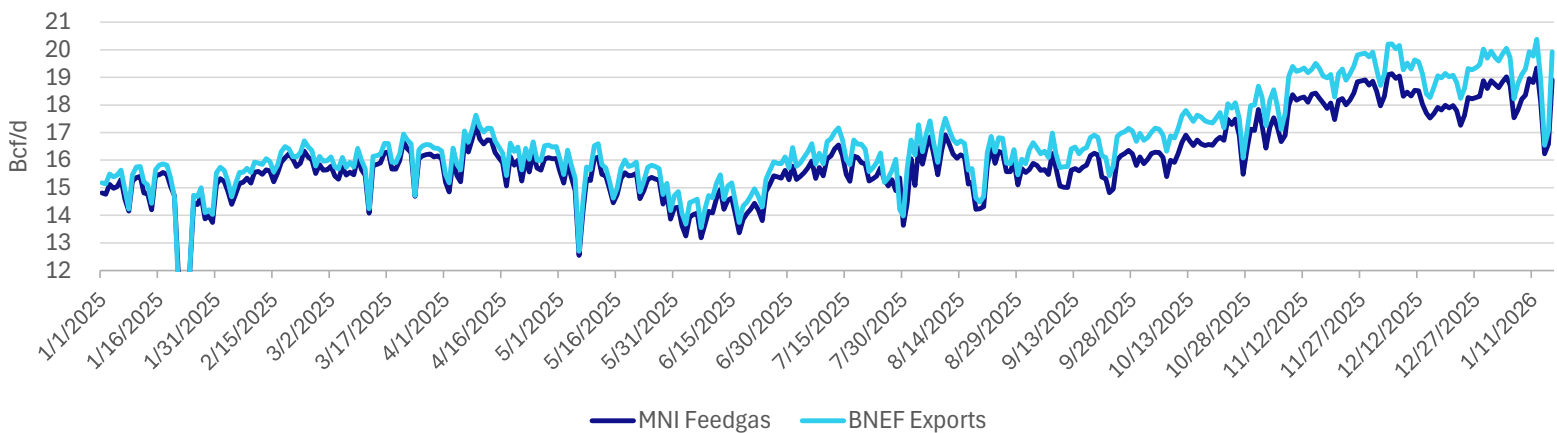


## US LNG Weekly Recap - Week of 01/16/2026

### Weekly Highlights

- Corpus Christi S3:** Cheniere filed a permit with Texas suggesting they plan to start commissioning operations for Train 5. FERC approved a request to introduce propane into the hot oil furnace, further supporting Train 5 is nearing first LNG.
- Golden Pass:** FERC granted the request to introduce hazardous fluids into the refrigerant storage system and Train 1 liquid flare. This step suggest cool downs of the piping and equipment are beginning and feedgas should soon start to show in pipeline nominations.
- Rio Grande:** In December the roof of Tank 2 was raised and construction continued on LNG storage tanks 1 and 2. Above ground piping was in progress for Trains 1 and 2 and they also began installation of equipment in Train 3.
- Port Arthur:** Latest construction report states continuing LNG tank and feedgas pipeline construction, with no new major milestones met.
- CP2/CP Express:** Construction at the Moss Lake compressor station began in December, focused on site grading and ancillary systems.
- Commonwealth LNG:** Signed an SPA with Saudi Aramco for 1 MTPA with the option to expand to 2 MTPA. Commonwealth LNG has yet to make FID and has previously stated additional contracting would be required for them to do so. The facility was granted a 20-year export license to non-free trade agreement countries last week as well. The latest guidance is for FID by the end of 1Q26.
- Delfin LNG:** Stated they plan to make FID next month (February). MNI analysis suggests they have enough SPAs to potentially FID 2 trains.

Daily L48 LNG Feedgas Total



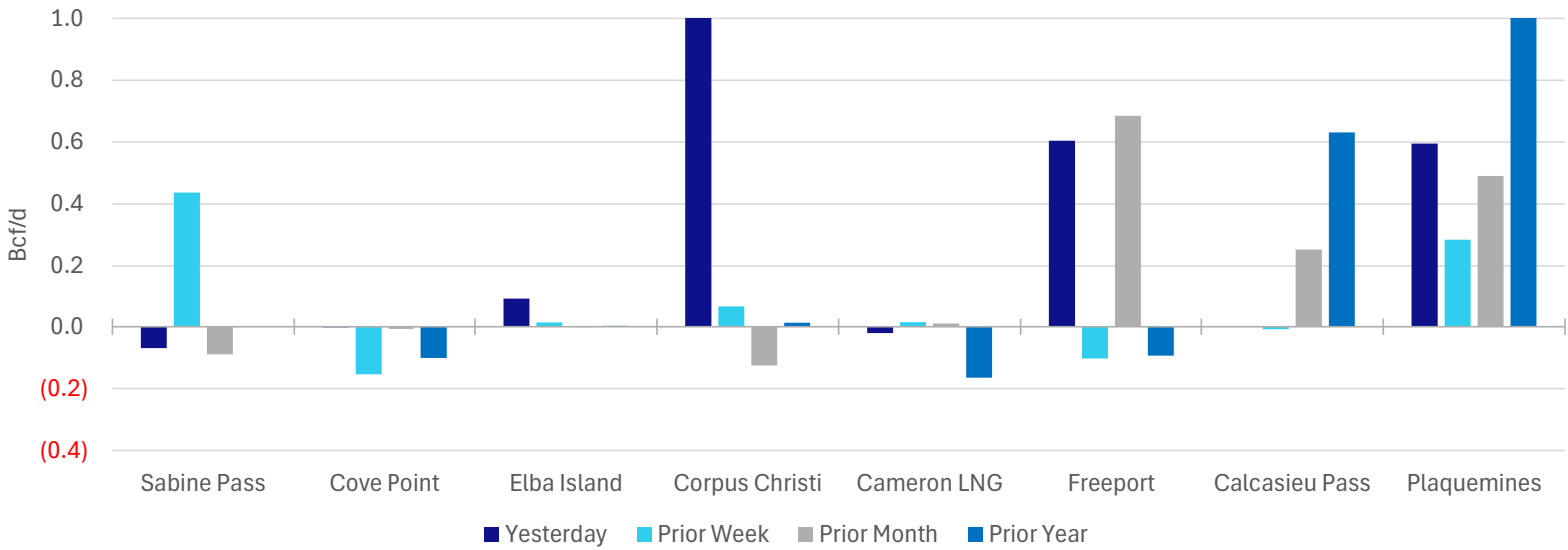
### Absolute Feedgas Volume by Facility (Bcf/d)

	Sabine Pass	Cove Point	Elba Island	Corpus Christi	Cameron LNG	Freeport	Calcasieu Pass	Plaquemines	Golden Pass	Total
Today	5.13	0.75	0.38	2.39	2.17	1.90	1.84	4.36	0.00	18.91
Yesterday	5.20	0.76	0.29	1.27	2.19	1.29	1.84	3.76	0.00	16.59
Prior Week	4.69	0.91	0.36	2.32	2.15	2.00	1.85	4.07	0.00	18.35
Prior Month	5.22	0.76	0.38	2.51	2.16	1.21	1.59	3.87	0.00	17.69
Prior Year	5.13	0.85	0.37	2.37	2.33	1.99	1.21	1.21	0.00	15.47
30-day Avg.	4.98	0.88	0.37	2.28	2.12	1.77	1.71	4.10	0.00	18.21

### Change in Feedgas from Today (Bcf/d)

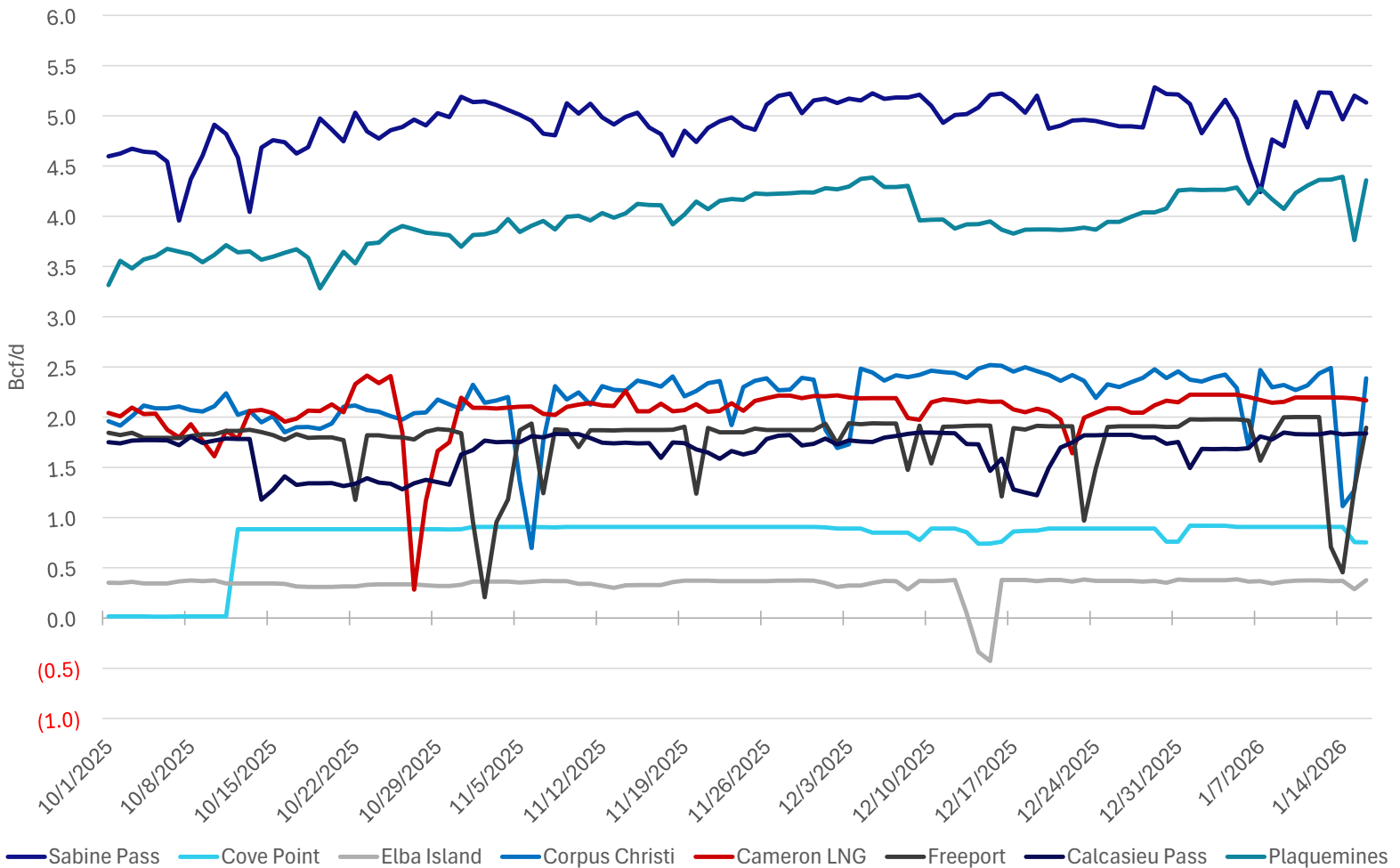
	Sabine Pass	Cove Point	Elba Island	Corpus Christi	Cameron LNG	Freeport	Calcasieu Pass	Plaquemines	Golden Pass	Total
Yesterday	(0.07)	(0.00)	0.09	1.11	(0.02)	0.60	0.00	0.60	0.00	2.31
Prior Week	0.44	(0.15)	0.01	0.07	0.01	(0.10)	(0.01)	0.28	0.00	0.55
Prior Month	(0.09)	(0.01)	(0.00)	(0.13)	0.01	0.69	0.25	0.49	0.00	1.22
Prior Year	0.00	(0.10)	0.00	0.01	(0.16)	(0.09)	0.63	3.15	0.00	3.44
30-day Avg.	0.15	(0.13)	0.01	0.10	0.05	0.13	0.13	0.26	0.00	0.70

Change in Feedgas Deliveries by Facility

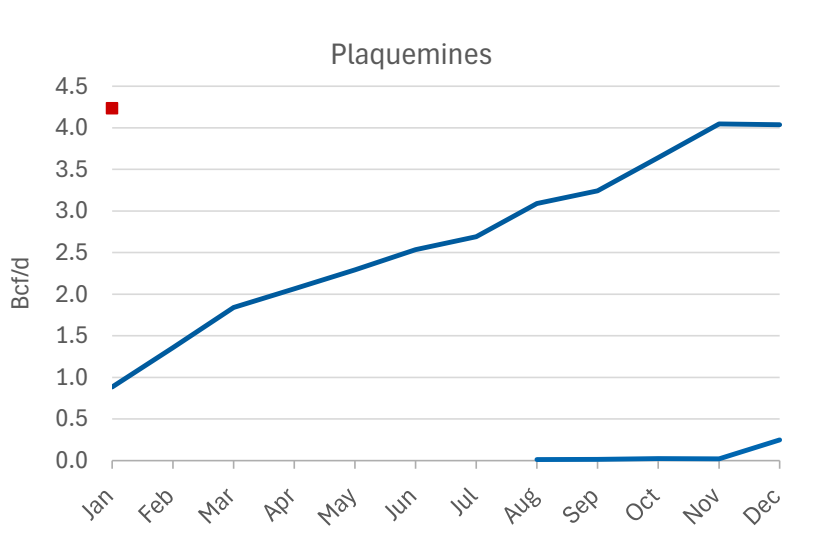
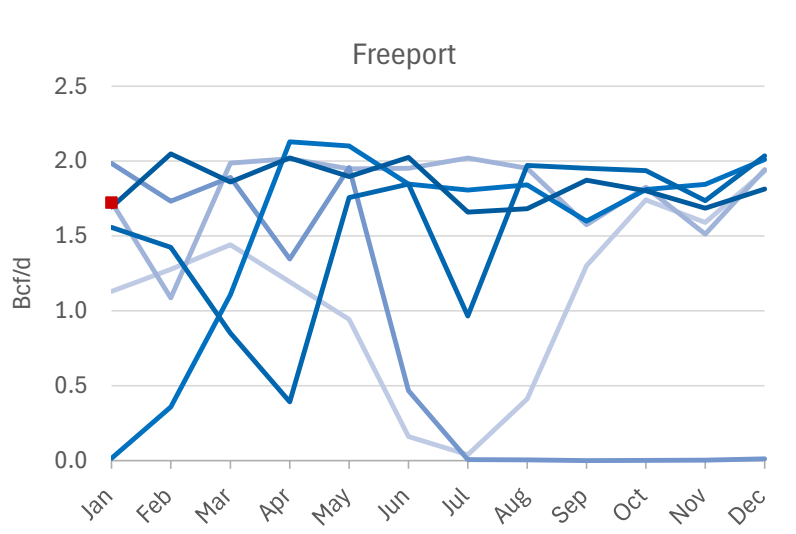
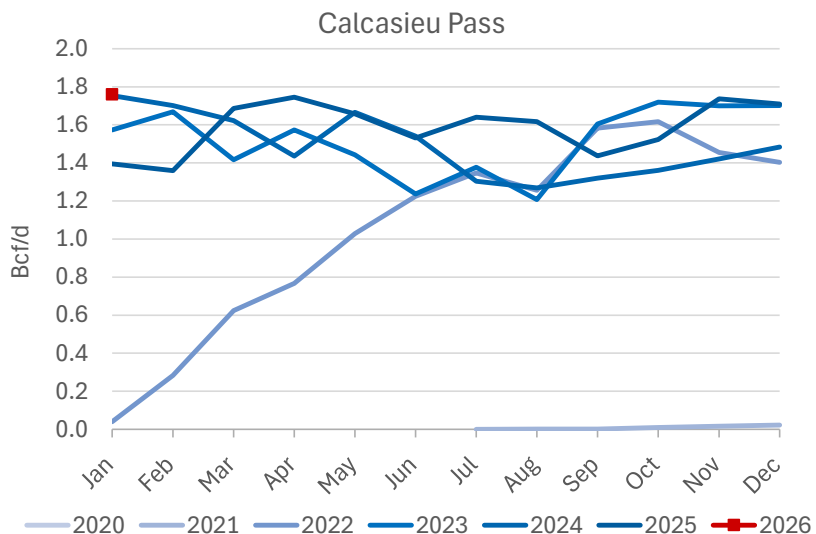
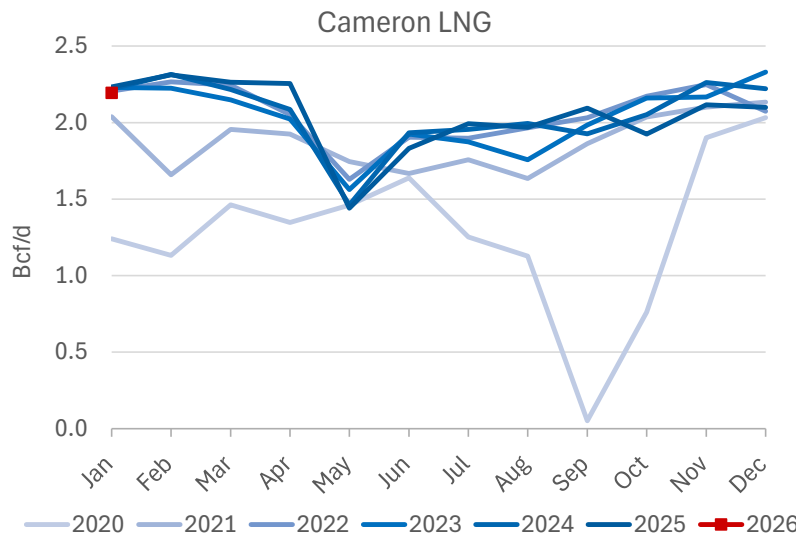
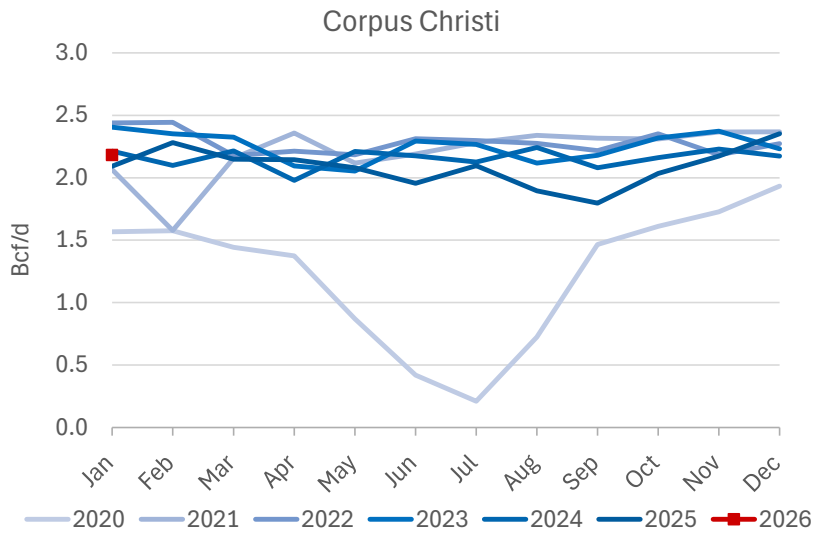
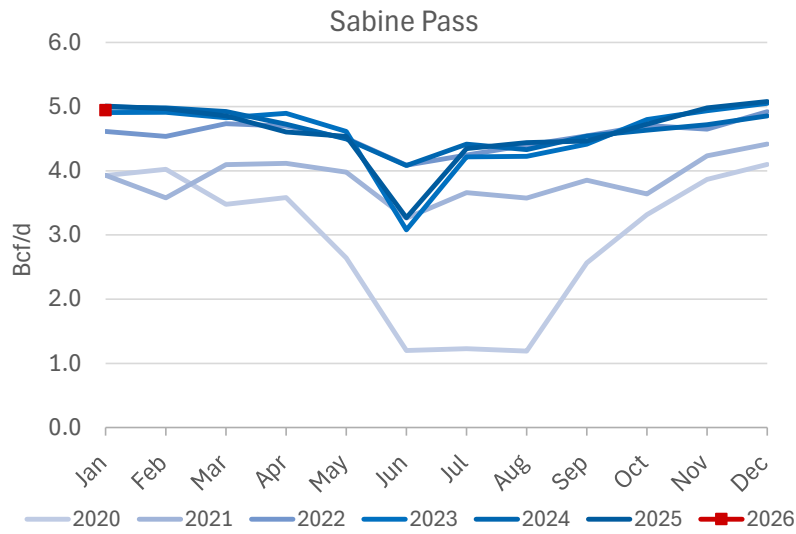


Note: Chart axis is truncated for visualization. Plaquemines prior year comparison exceeds chart axis.

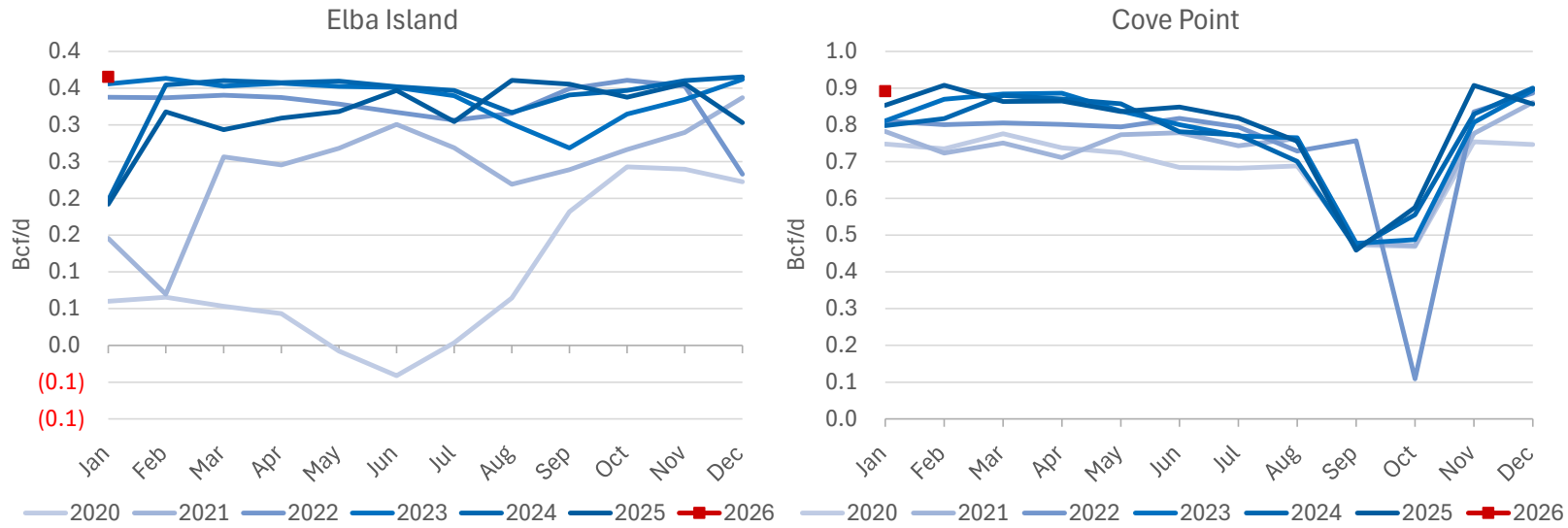
Daily LNG Feedgas Deliveries by Facility - Prior 3 Months



Monthly Average Feedgas Flows by Facility



Monthly Average Feedgas Flows by Facility



US LNG Facility Tracker

Project Status	Facility	Project Stage	Estimated ISD	Capacity Bcf/d
Under Construction	Corpus Christi Stage 3	Trains 1-7	2025	1.59
Under Construction	Corpus Christi Expansion	Trains 8-9	2029	0.40
Under Construction	CP2	CP2	2027	3.96
Under Construction	Golden Pass	Trains 1-3	2026-2027	2.58
Under Construction	Louisiana LNG	Trains 1-3	2029	2.33
Under Construction	Port Athur Phase 1	Trains 1-2	2027	1.91
Under Construction	Port Athur Phase 2	Trains 3-6	2030	1.91
Under Construction	Rio Grande	Train 1-5	2027-2031	3.95
Pending FID	Plaquemines Phase 2	Trains 1-36	2030	4.00
Pending FID	Alaska LNG		--	2.55
Pending FID	Commonwealth		2029	1.21
Pending FID	Delfin		--	1.80
Pending FID	Gulf LNG		--	1.53
Pending FID	Lake Charles		--	2.33
Pending FID	Texas LNG		--	0.56
Pending FID	Cameron	Train 4	--	--
Pending FID	Rio Grande	Trains 6-8	--	2.37
Proposed	Sabine	Trains 7-9	--	2.37
Proposed	ST LNG		2029	1.11