

## US LNG Weekly Recap - Week of 01/30/2026

### Weekly Highlights

**Golden Pass:** Exxon reported they expect Golden Pass train 1 to reach first LNG in March during their earnings call today. This is a slight delay from the prior guidance from Qatar Energy for February. FERC approved the facility to introduce hazardous fluids into the warm end of Train 1 this week, which indicates the facility is entering the final phase of commissioning and should be ready to begin cool down in a few weeks.

**Corpus Christi S3:** FERC approved the request to introduce fuel gas and hot oil into train 5, suggesting the facility will begin commissioning the train. Trains 1-3 already reached substantial completions and Cheniere is expected to announce substantial completion of train 4 in their earnings call next month. Train 5's progress leaves just trains 6 and 7 to reach the commissioning phase this year for all trains to be online as guided.

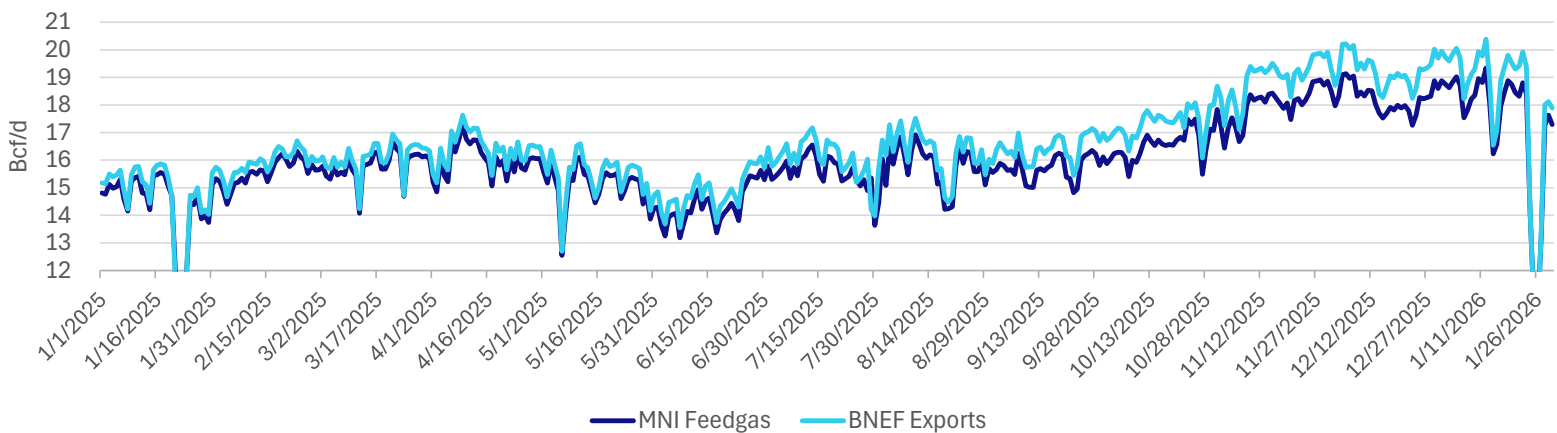
**CP2:** Venture Global hyped up the receiving of equipment for Train 1 this week, though the latest construction report from December showed they were still pouring foundations for the LNG tanks. Therefore, the train is not likely being installed soon, despite the company's excitement on social media.

**LA LNG:** Monthly construction report shows they continued construction of LNG tank 1 and completed work on LNG tank 2 concrete foundation in December. January plans to start erecting liner plate for 1st half of LNG tank 1, and complete the concrete slab placement and begin pre-roof assembly for LNG tank 2.

**Alaska LNG:** The project is quickly progressing toward positive FID after selecting construction and line supply companies along with gas supply agreements with Exxon, Hilcorp, and ConocoPhillips this week. They are targeting first LNG in 2029 and the progress suggests they could be close to an FID.

**Rio Grande LNG:** requested approval to construct remainder of LNG storage tanks 1 and 2.

Daily L48 LNG Feedgas Total



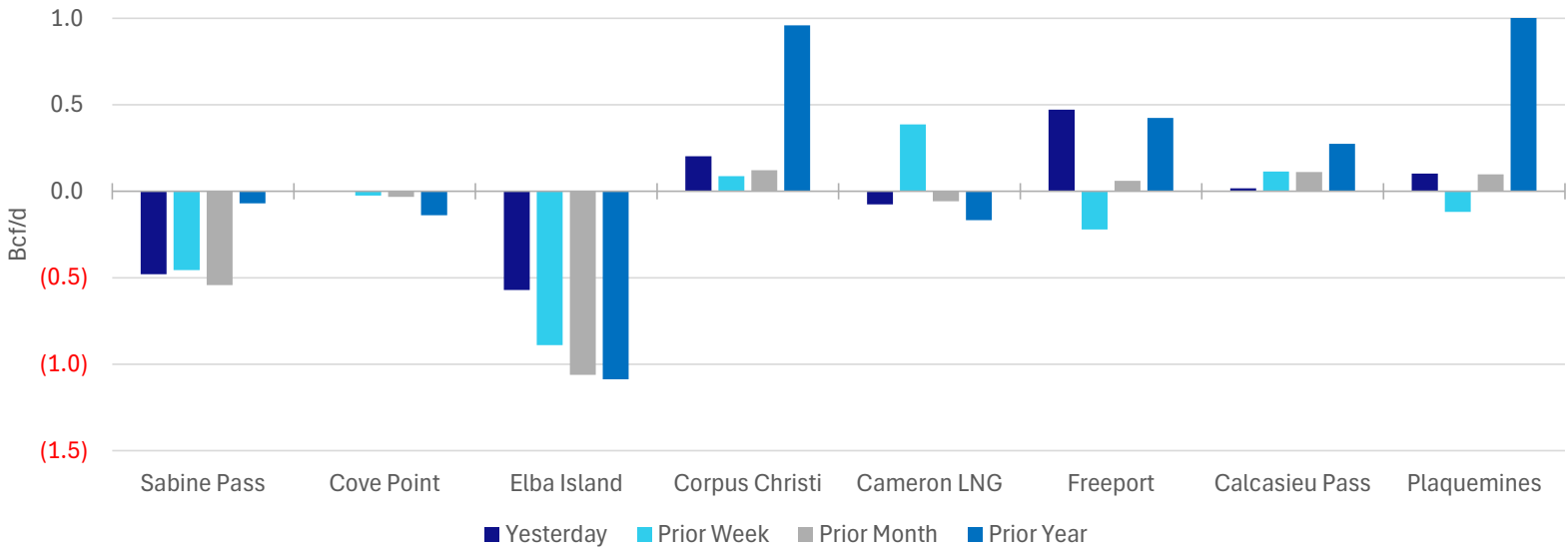
### Absolute Feedgas Volume by Facility (Bcf/d)

	Sabine Pass	Cove Point	Elba Island	Corpus Christi	Cameron LNG	Freeport	Calcasieu Pass	Plaquemines	Golden Pass	Total
Today	4.67	0.73	(0.71)	2.51	2.11	1.96	1.85	4.18	0.00	17.29
Yesterday	5.15	0.73	(0.14)	2.31	2.18	1.49	1.83	4.07	0.00	17.63
Prior Week	5.13	0.75	0.18	2.42	1.72	2.18	1.73	4.29	0.00	18.41
Prior Month	5.22	0.76	0.35	2.39	2.16	1.90	1.73	4.08	0.00	18.60
Prior Year	4.74	0.87	0.38	1.55	2.27	1.54	1.57	0.82	0.00	13.74
30-day Avg.	4.74	0.82	0.09	2.22	2.10	1.65	1.72	4.13	0.00	17.47

### Change in Feedgas from Today (Bcf/d)

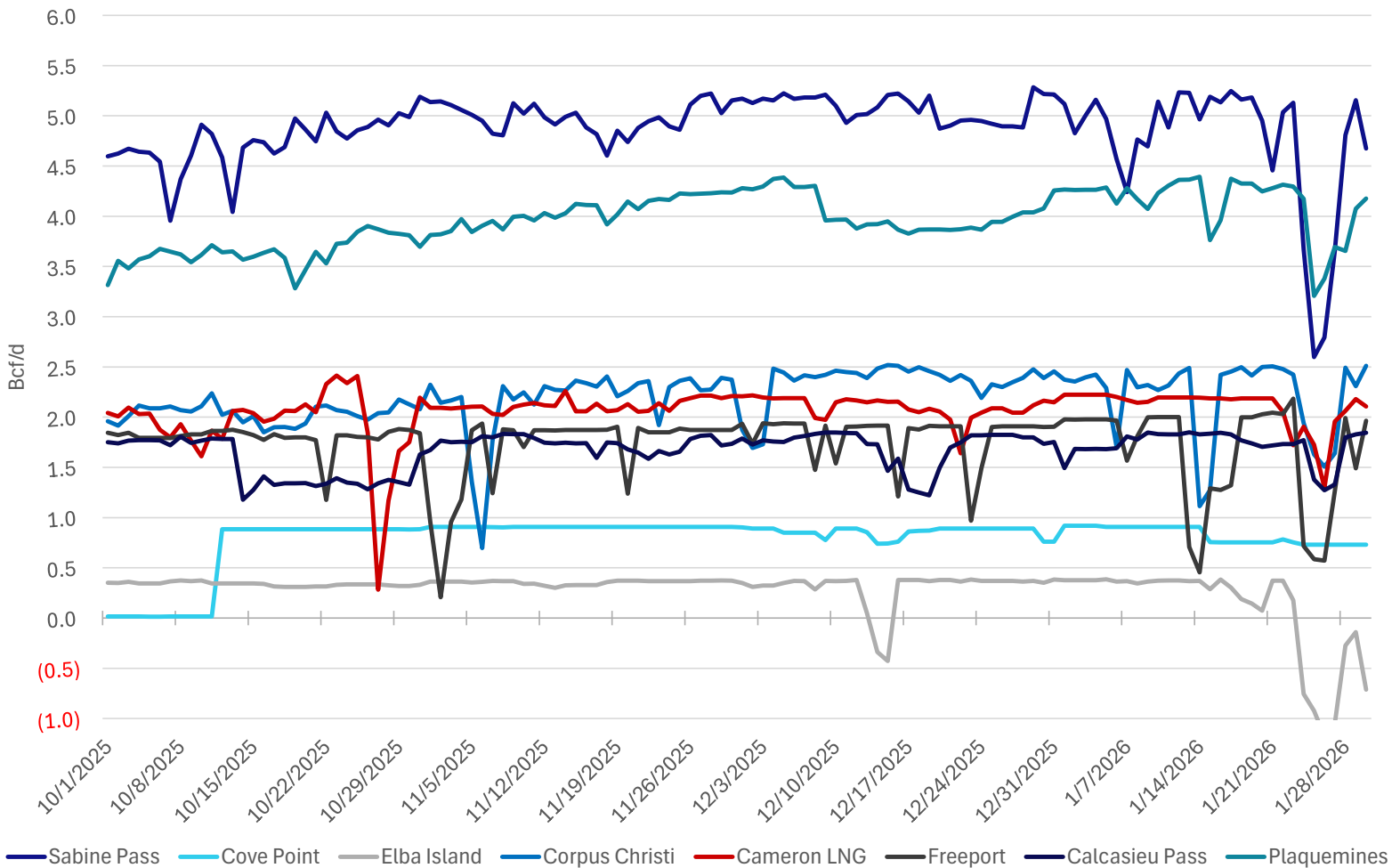
	Sabine Pass	Cove Point	Elba Island	Corpus Christi	Cameron LNG	Freeport	Calcasieu Pass	Plaquemines	Golden Pass	Total
Yesterday	(0.48)	(0.00)	(0.57)	0.20	(0.08)	0.47	0.02	0.10	0.00	(0.34)
Prior Week	(0.46)	(0.02)	(0.89)	0.09	0.39	(0.22)	0.11	(0.12)	0.00	(1.12)
Prior Month	(0.54)	(0.03)	(1.06)	0.12	(0.06)	0.06	0.11	0.10	0.00	(1.30)
Prior Year	(0.07)	(0.14)	(1.09)	0.96	(0.17)	0.42	0.27	3.36	0.00	3.55
30-day Avg.	(0.06)	(0.09)	(0.80)	0.29	0.00	0.32	0.12	0.04	0.00	(0.18)

### Change in Feedgas Deliveries by Facility

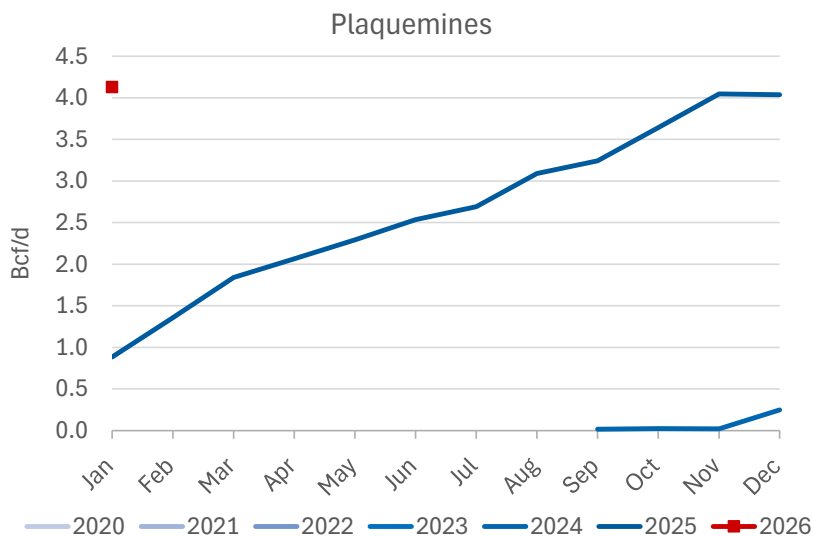
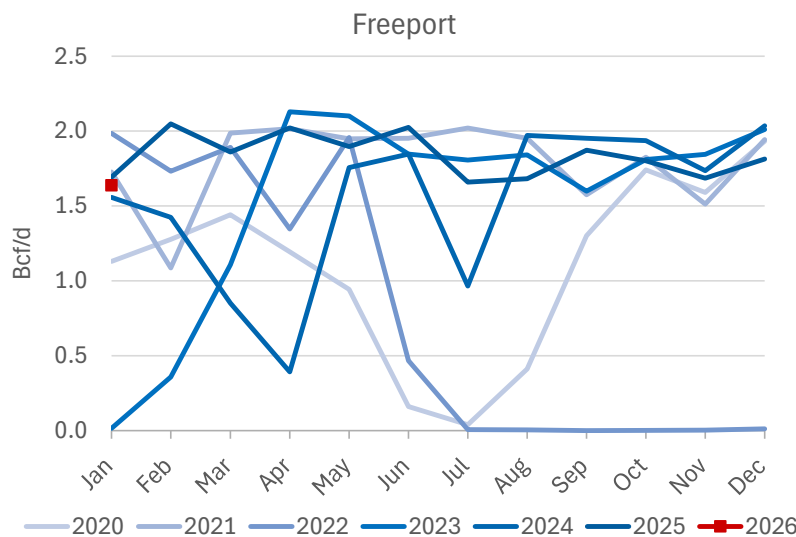
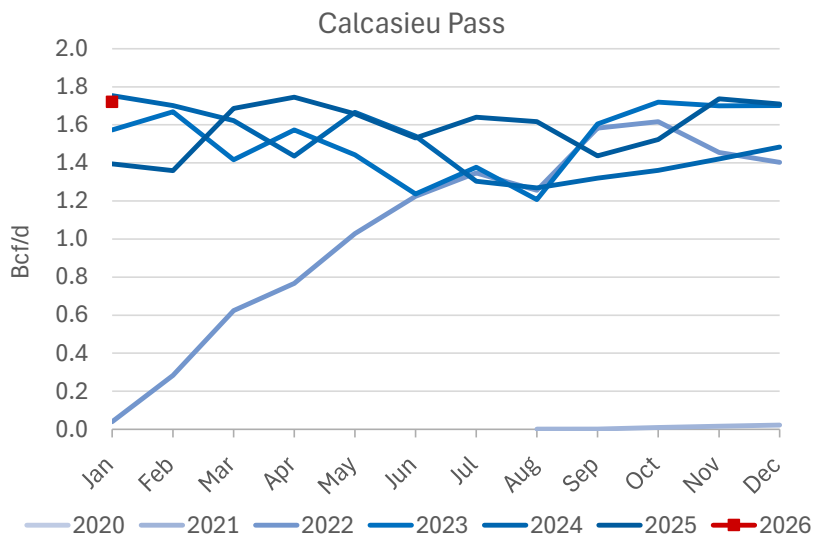
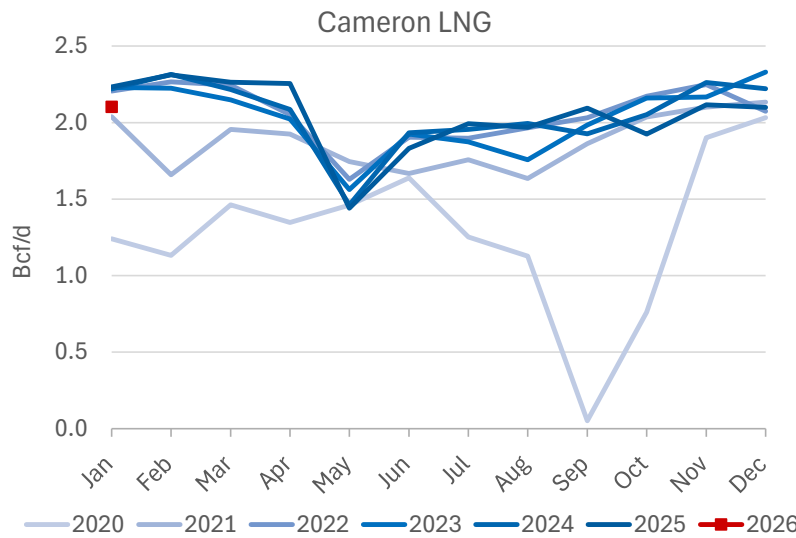
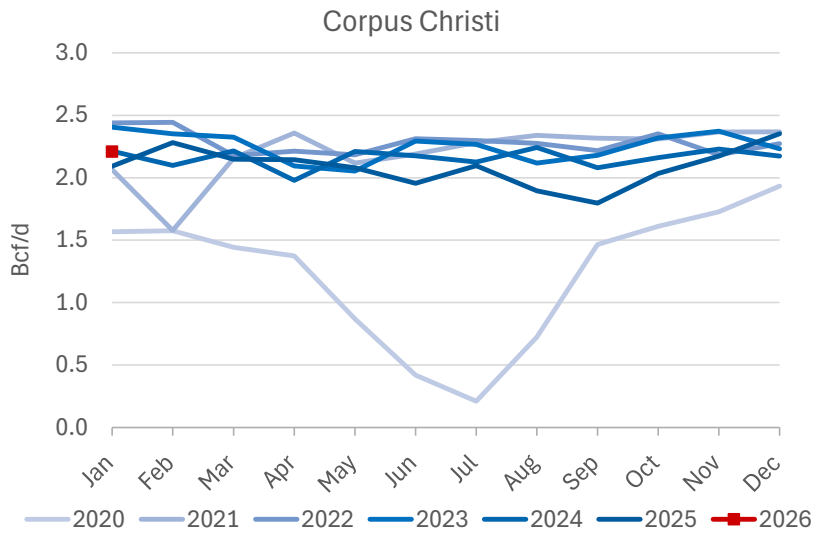
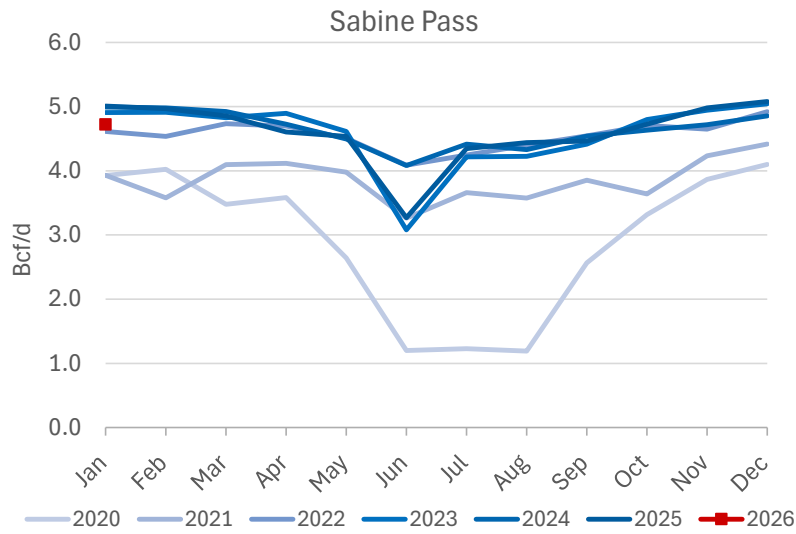


Note: Chart axis is truncated for visualization. Plaquemines prior year comparison exceeds chart axis.

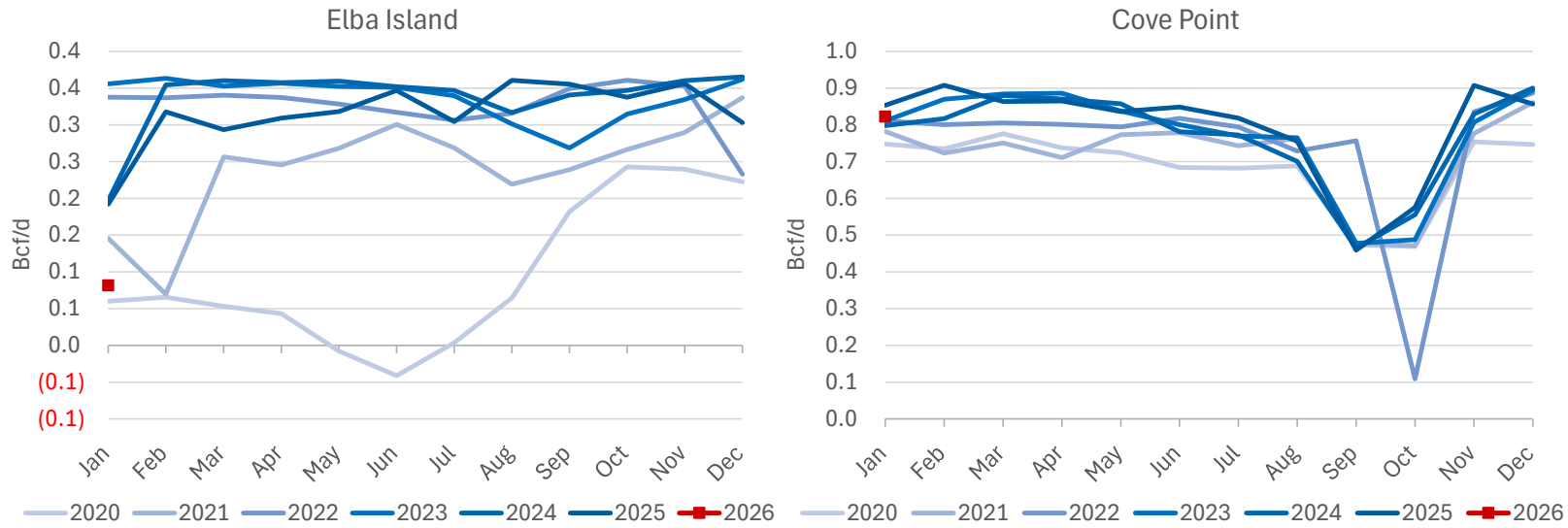
### Daily LNG Feedgas Deliveries by Facility - Prior 3 Months



Monthly Average Feedgas Flows by Facility



Monthly Average Feedgas Flows by Facility



US LNG Facility Tracker

Project Status	Facility	Project Stage	Estimated ISD	Capacity Bcf/d
Under Construction	Corpus Christi Stage 3	Trains 1-7	2025	1.59
Under Construction	Corpus Christi Expansion	Trains 8-9	2029	0.40
Under Construction	CP2	CP2	2027	3.96
Under Construction	Golden Pass	Trains 1-3	2026-2027	2.58
Under Construction	Louisiana LNG	Trains 1-3	2029	2.33
Under Construction	Port Athur Phase 1	Trains 1-2	2027	1.91
Under Construction	Port Athur Phase 2	Trains 3-6	2030	1.91
Under Construction	Rio Grande	Train 1-5	2027-2031	3.95
Pending FID	Plaquemines Phase 2	Trains 1-36	2030	4.00
Pending FID	Alaska LNG		--	2.55
Pending FID	Commonwealth		2029	1.21
Pending FID	Delfin		--	1.80
Pending FID	Gulf LNG		--	1.53
Pending FID	Lake Charles		--	2.33
Pending FID	Texas LNG		--	0.56
Pending FID	Cameron	Train 4	--	--
Pending FID	Rio Grande	Trains 6-8	--	2.37
Proposed	Sabine	Trains 7-9	--	2.37
Proposed	ST LNG		2029	1.11