

## US LNG Weekly Recap - Week of 02/06/2026

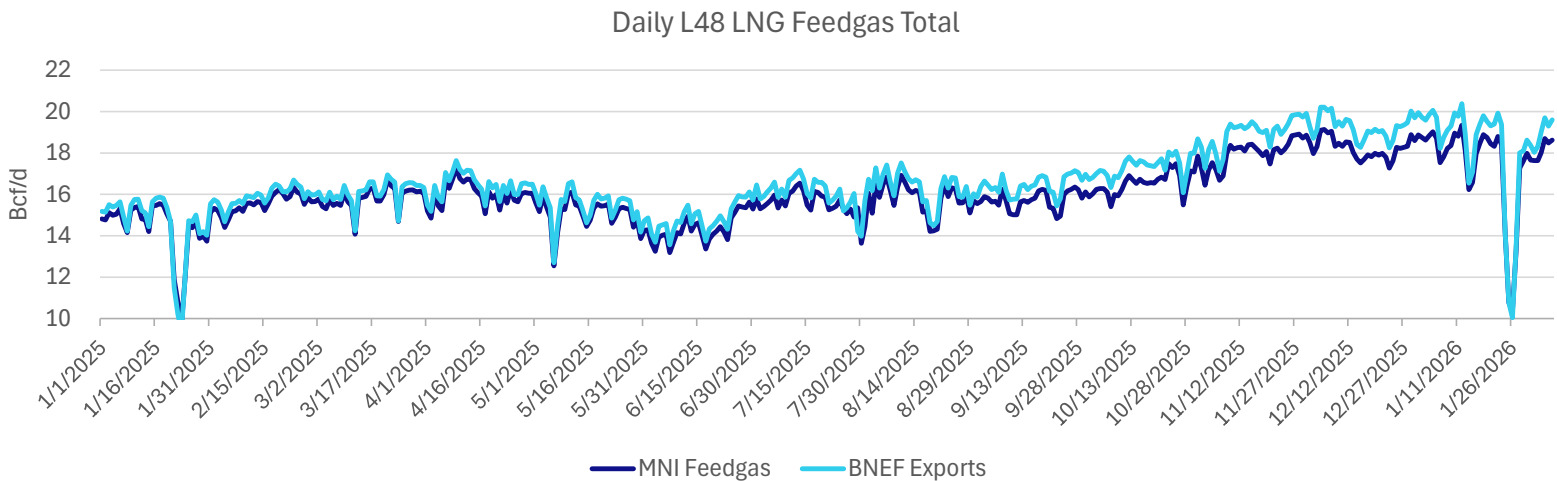
### Weekly Highlights

**Corpus Christi:** Cheniere filed a permit request for Stage 4, which would be 4 large scale trains with 3.1 Bcf/d of incremental capacity. The request seeks FERC approval before May 2027, suggesting the project wouldn't be online until the 2030's once it makes positive FID. The latest construction report for the Stage 3 project stated train 4 is at substantial completing and key work for the month included aboveground piping, concrete pours, and structural steel erection for Trains 5-7. Construction on midscale trains 8&9 included pipe installations and construction on the sixth BOG compressor.

**CP2:** Construction on CP Express continue. The Texas portion of the pipeline is being built with typical trench digging, while the Louisiana portion requires underground horizontal drilling through marsh lands. The Texas phase appears ahead of schedule as pipe is being laid and tested, while the Louisiana stage is still working through drilling phases. The Moss Lake compressor station is just beginning active construction and could take at least 12 months to complete. The project is guided to be complete by the end of the year, but may fall into 1Q27 if construction lags. For the facility, work is ongoing with the pouring of foundations for the LNG tanks.

**Golden Pass:** Construction of fuel gas headers to Train 1 is complete, while Trains 2-3 continue construction of piping and steel installation.

**LA LNG:** Construction continued with LNG Tank 1 walls being installed and roof pre-assembly beginning and foundation installation for LNG Tank 2.



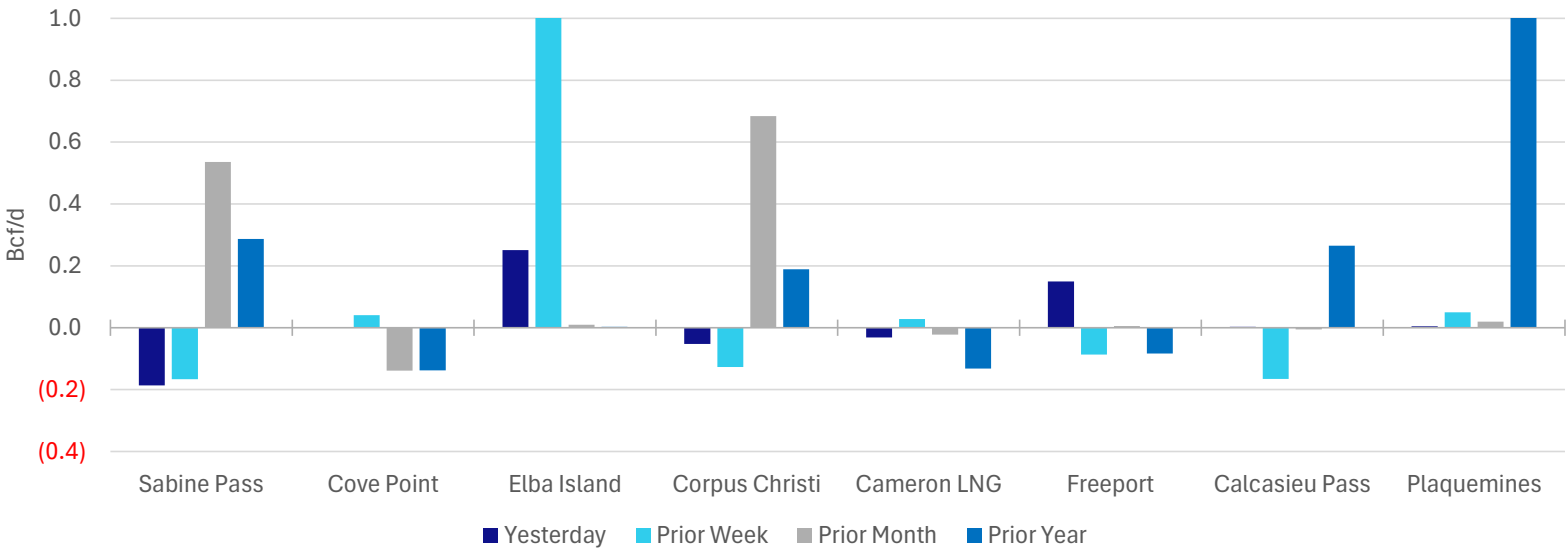
### Absolute Feedgas Volume by Facility (Bcf/d)

	Sabine Pass	Cove Point	Elba Island	Corpus Christi	Cameron LNG	Freeport	Calcasieu Pass	Plaquemines	Golden Pass	Total
Today	5.10	0.77	0.37	2.39	2.18	1.97	1.68	4.15	0.00	18.62
Yesterday	5.29	0.77	0.12	2.44	2.21	1.82	1.68	4.14	0.00	18.48
Prior Week	5.27	0.73	(0.69)	2.52	2.15	2.06	1.85	4.10	0.00	17.98
Prior Month	4.57	0.91	0.36	1.70	2.20	1.97	1.69	4.13	0.00	17.53
Prior Year	4.82	0.91	0.37	2.20	2.31	2.06	1.42	1.08	0.00	15.16
30-day Avg.	4.82	0.79	(0.04)	2.25	2.10	1.65	1.74	4.07	0.00	17.37

### Change in Feedgas from Today (Bcf/d)

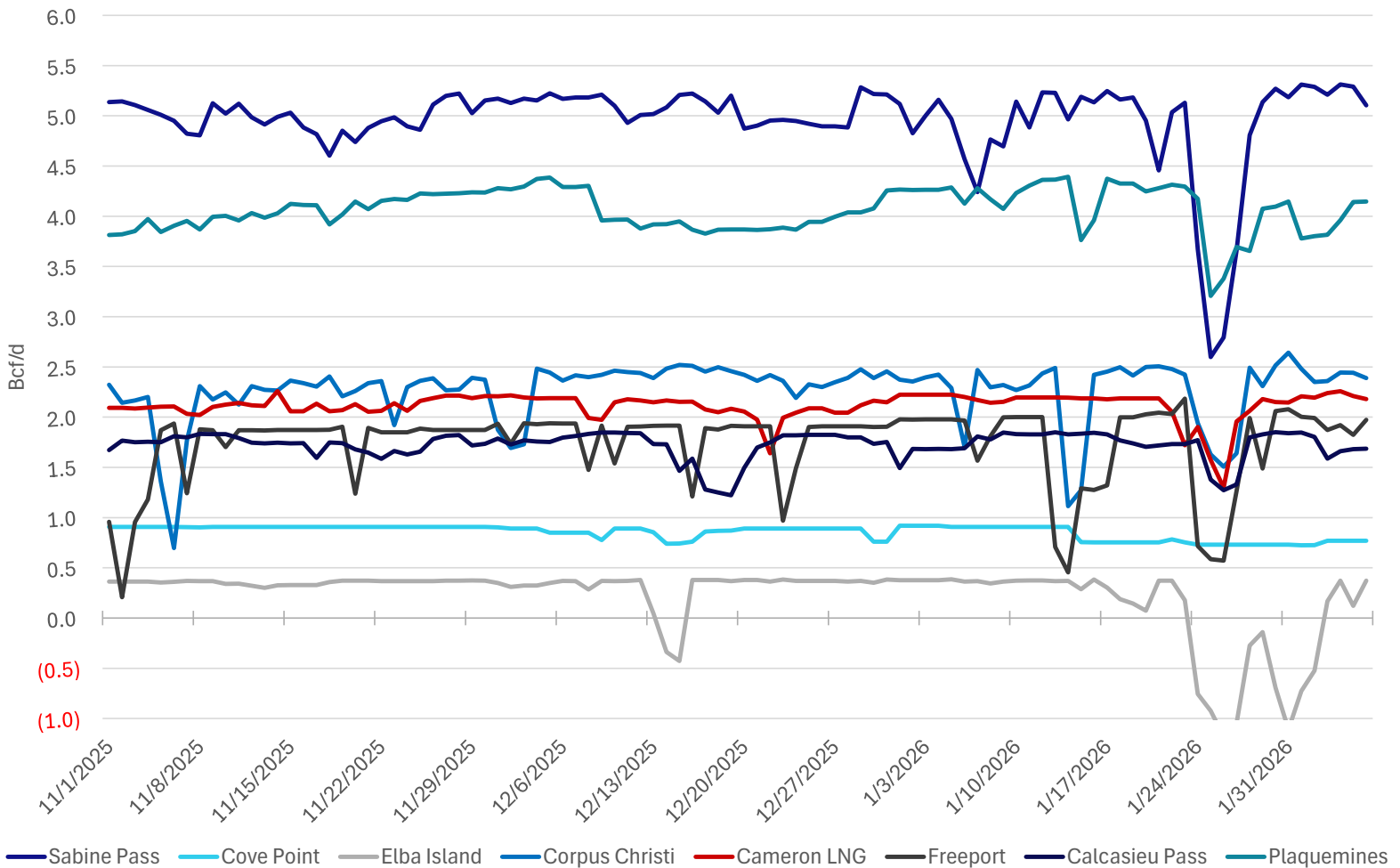
	Sabine Pass	Cove Point	Elba Island	Corpus Christi	Cameron LNG	Freeport	Calcasieu Pass	Plaquemines	Golden Pass	Total
Yesterday	(0.19)	0.00	0.25	(0.05)	(0.03)	0.15	0.00	0.00	0.00	0.14
Prior Week	(0.17)	0.04	1.07	(0.13)	0.03	(0.09)	(0.17)	0.05	0.00	0.64
Prior Month	0.54	(0.14)	0.01	0.68	(0.02)	0.01	(0.01)	0.02	0.00	1.09
Prior Year	0.29	(0.14)	0.00	0.19	(0.13)	(0.08)	0.27	3.07	0.00	3.46
30-day Avg.	0.29	(0.02)	0.41	0.14	0.08	0.33	(0.05)	0.08	0.00	1.25

Change in Feedgas Deliveries by Facility

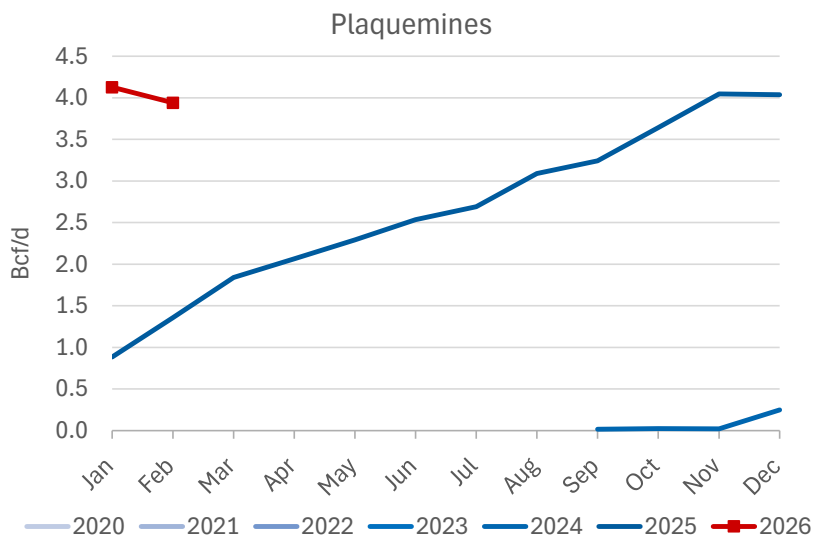
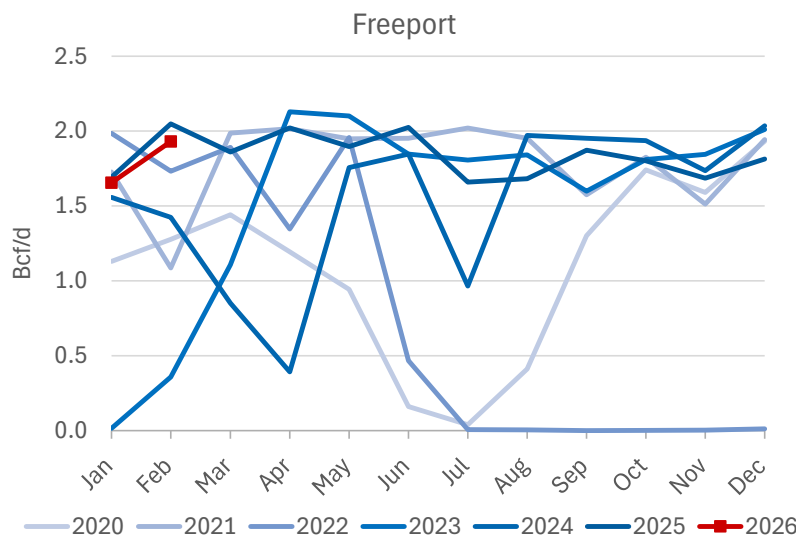
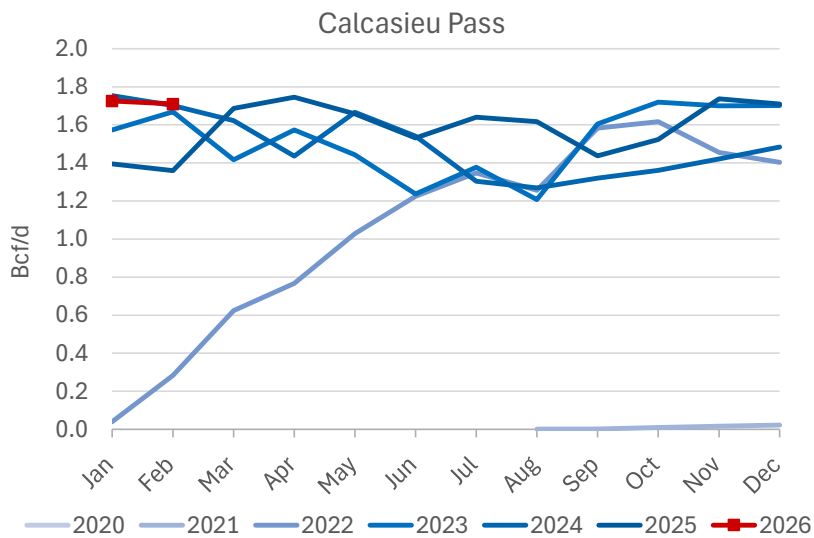
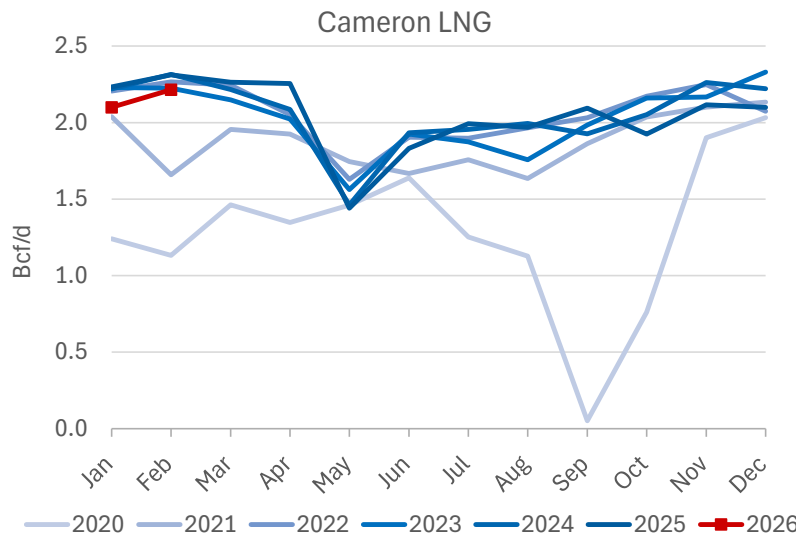
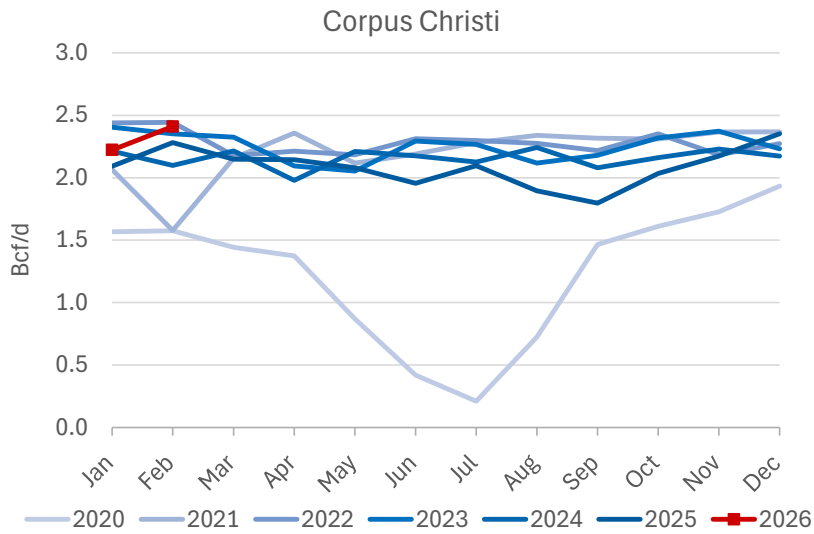
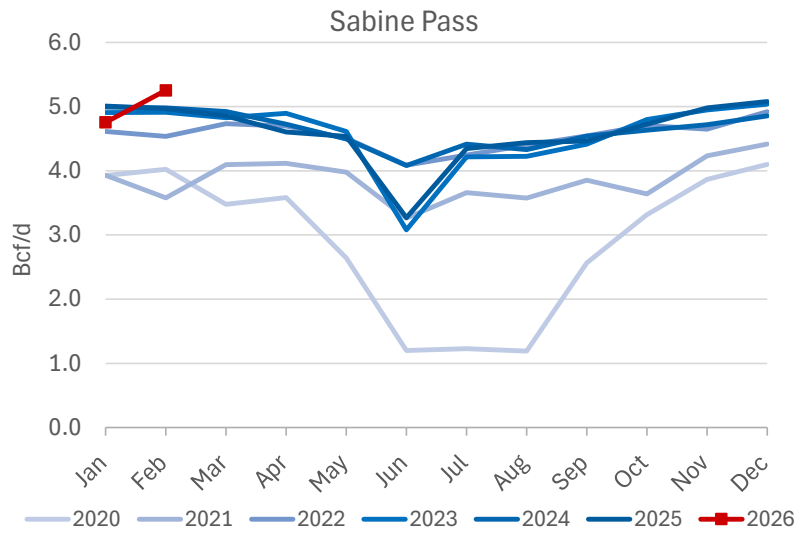


Note: Chart axis is truncated for visualization. Plaquemines prior year comparison exceeds chart axis.

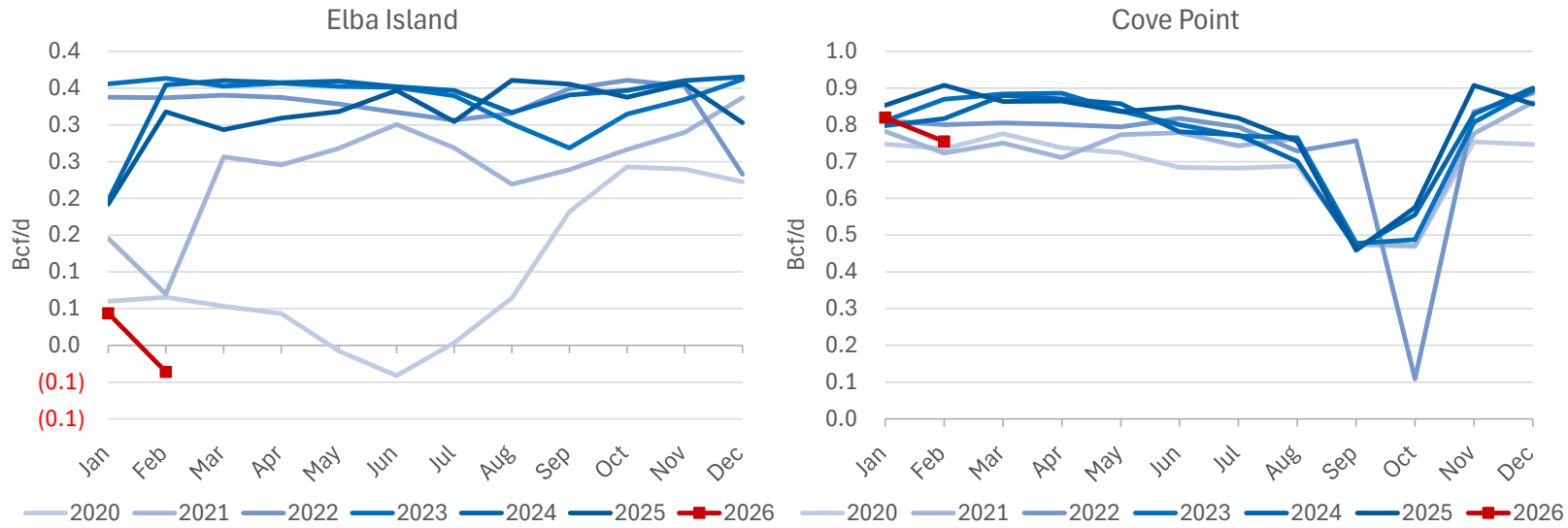
Daily LNG Feedgas Deliveries by Facility - Prior 3 Months



## Monthly Average Feedgas Flows by Facility



Monthly Average Feedgas Flows by Facility



US LNG Facility Tracker

Project Status	Facility	Project Stage	Estimated ISD	Capacity Bcf/d
Under Construction	Corpus Christi Stage 3	Trains 1-7	2025	1.59
Under Construction	Corpus Christi Expansion	Trains 8-9	2029	0.40
Under Construction	CP2	CP2	2027	3.96
Under Construction	Golden Pass	Trains 1-3	2026-2027	2.58
Under Construction	Louisiana LNG	Trains 1-3	2029	2.33
Under Construction	Port Athur Phase 1	Trains 1-2	2027	1.91
Under Construction	Port Athur Phase 2	Trains 3-6	2030	1.91
Under Construction	Rio Grande	Train 1-5	2027-2031	3.95
Pending FID	Plaquemines Phase 2	Trains 1-36	2030	4.00
Pending FID	Alaska LNG		--	2.55
Pending FID	Commonwealth		2029	1.21
Pending FID	Delfin		--	1.80
Pending FID	Gulf LNG		--	1.53
Pending FID	Lake Charles		--	2.33
Pending FID	Texas LNG		--	0.56
Pending FID	Cameron	Train 4	--	--
Pending FID	Rio Grande	Trains 6-8	--	2.37
Proposed	Sabine	Trains 7-9	--	2.37
Proposed	ST LNG		2029	1.11
Permitting	Corpus Christ Stage 4	Trains 1-4	2030+	3.15