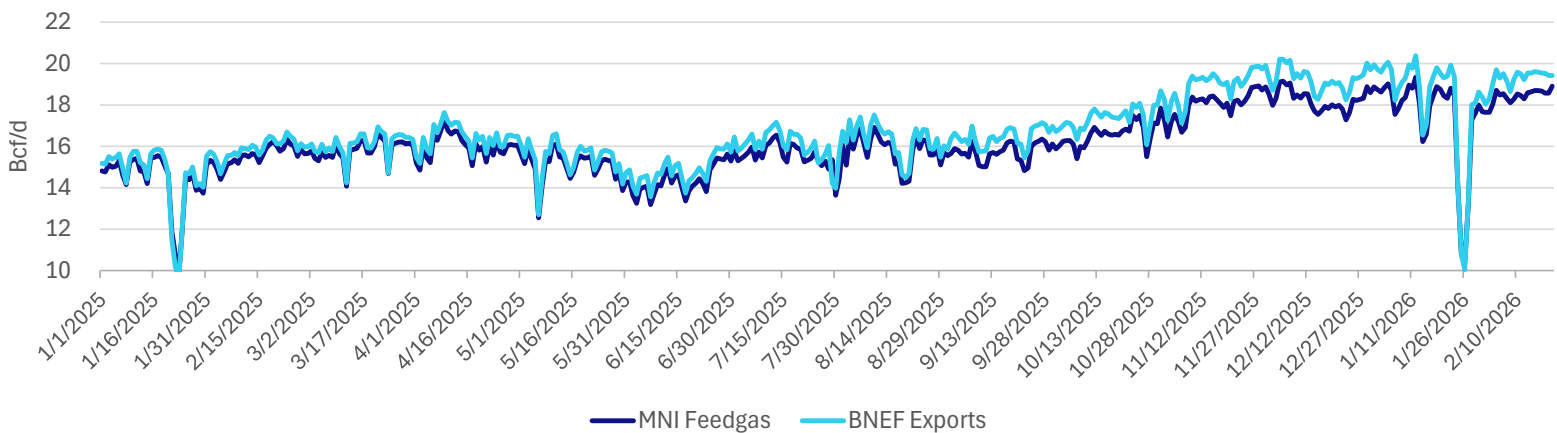


US LNG Weekly Recap - Week of 02/20/2026

Weekly Highlights

- Golden Pass:** Feedgas shows signs of ramping this week, but nominations have been volatile. Watch for consistent flows to indicate first LNG.
- Port Arthur:** FERC granted approval to begin construction on LNG tank wall for tank C. The facility is expected to complete construction of phase 1 and phase 2 simultaneously as phase 2 will tie into the phase 1 facilities, including marine berths, utilizes and electrical substations, and feedgas headers. This filing indicated that initial construction activities for phase 2 have already begun and the phase 2 timeline has been accelerated.
- Corpus Christi ST3:** FERC granted approval to introduce feedgas to train 5.
- Louisiana LNG:** Granted approval to start constructing foundations of refrigerant storage spill containment basins, suggesting they are moving from ground prep activities to equipment setting. FERC approved their request to begin installing the inner tank for LNG tanks 1 and 2. Site prep for line 200 and line 300 is ongoing, with laying of pipe expected in 4Q26.
- Rio Grande:** The January construction report states civil construction of inner wall and roof for LNG storage tanks 1 and 2 was ongoing and above ground piping and equipment installation for trains 1, 2, and 3 continued. They started concrete placement for LNG tank 1 roof, indicating the roof has been successfully raised and construction will transition to inner wall construction. For Rio Bravo pipeline, construction is working on the Agua Dulce and Armstrong compressor stations, with foundations being poured.

Daily L48 LNG Feedgas Total



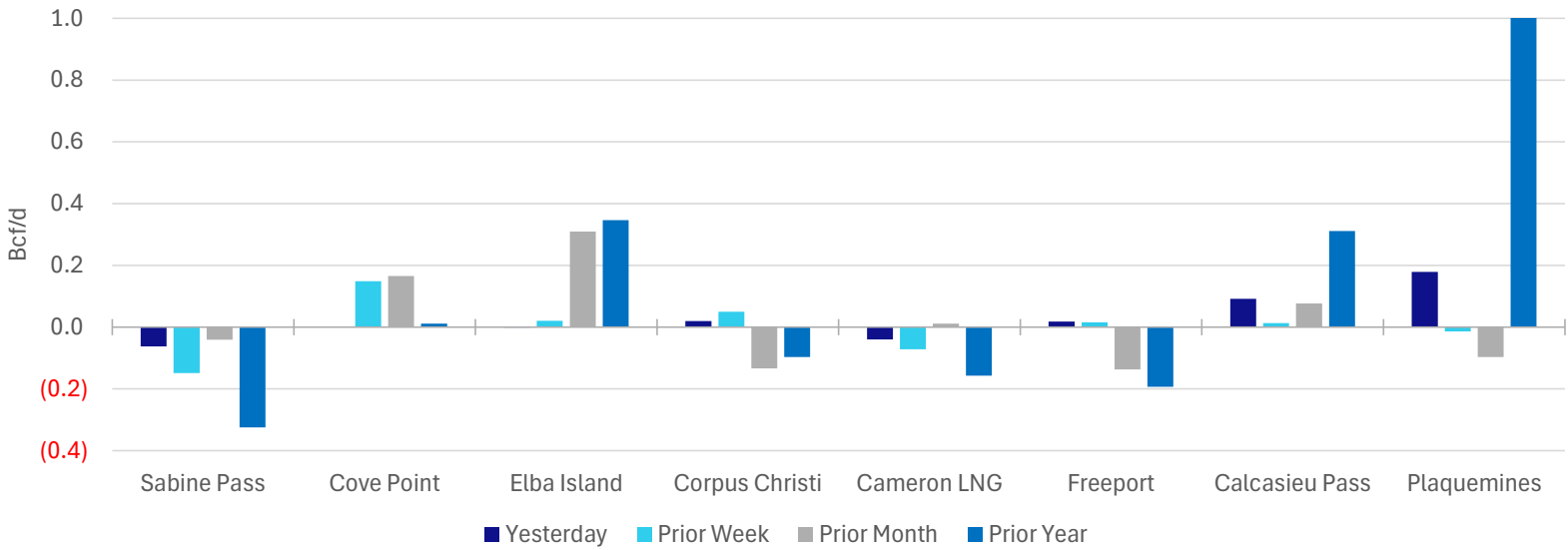
Absolute Feedgas Volume by Facility (Bcf/d)

	Sabine Pass	Cove Point	Elba Island	Corpus Christi	Cameron LNG	Freeport	Calcasieu Pass	Plaquemines	Golden Pass	Total
Today	4.91	0.92	0.38	2.37	2.20	1.89	1.78	4.15	0.30	18.91
Yesterday	4.97	0.92	0.38	2.35	2.24	1.87	1.69	3.97	0.18	18.58
Prior Week	5.06	0.77	0.36	2.32	2.27	1.88	1.77	4.16	0.00	18.59
Prior Month	4.95	0.75	0.07	2.50	2.19	2.03	1.71	4.25	0.00	18.45
Prior Year	5.24	0.91	0.04	2.46	2.36	2.08	1.47	1.48	0.00	16.04
30-day Avg.	4.85	0.79	(0.04)	2.31	2.12	1.77	1.67	4.03	0.02	17.52

Change in Feedgas from Today (Bcf/d)

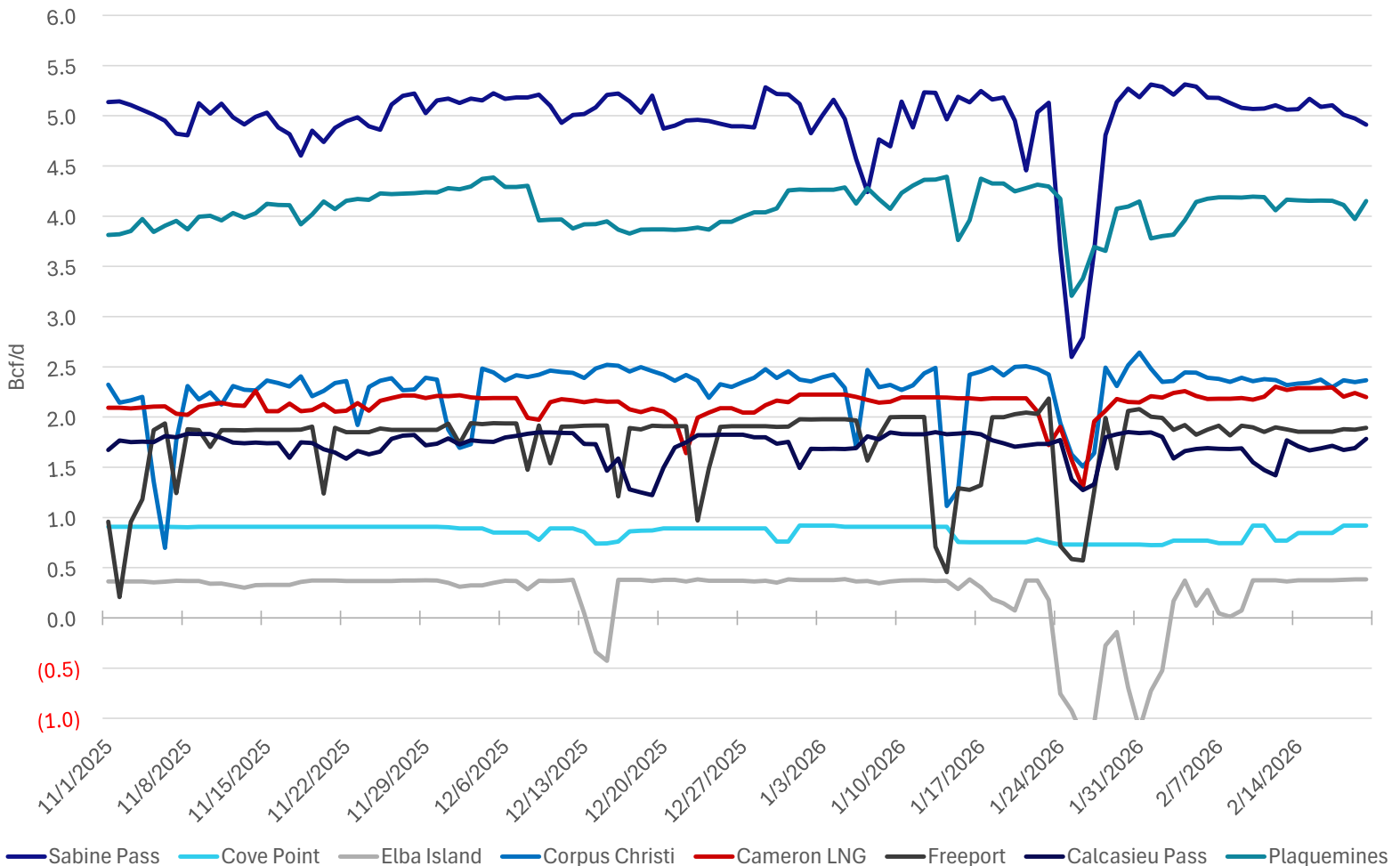
	Sabine Pass	Cove Point	Elba Island	Corpus Christi	Cameron LNG	Freeport	Calcasieu Pass	Plaquemines	Golden Pass	Total
Yesterday	(0.06)	0.00	(0.00)	0.02	(0.04)	0.02	0.09	0.18	0.13	0.33
Prior Week	(0.15)	0.15	0.02	0.05	(0.07)	0.02	0.01	(0.01)	0.30	0.32
Prior Month	(0.04)	0.17	0.31	(0.13)	0.01	(0.14)	0.08	(0.10)	0.30	0.46
Prior Year	(0.32)	0.01	0.35	(0.10)	(0.16)	(0.19)	0.31	2.67	0.30	2.87
30-day Avg.	0.06	0.13	0.42	0.06	0.08	0.13	0.11	0.12	0.28	1.39

Change in Feedgas Deliveries by Facility

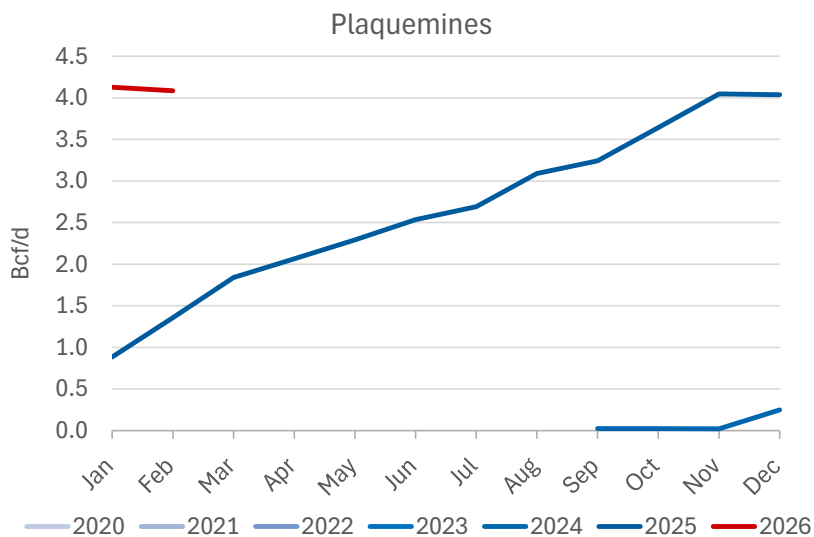
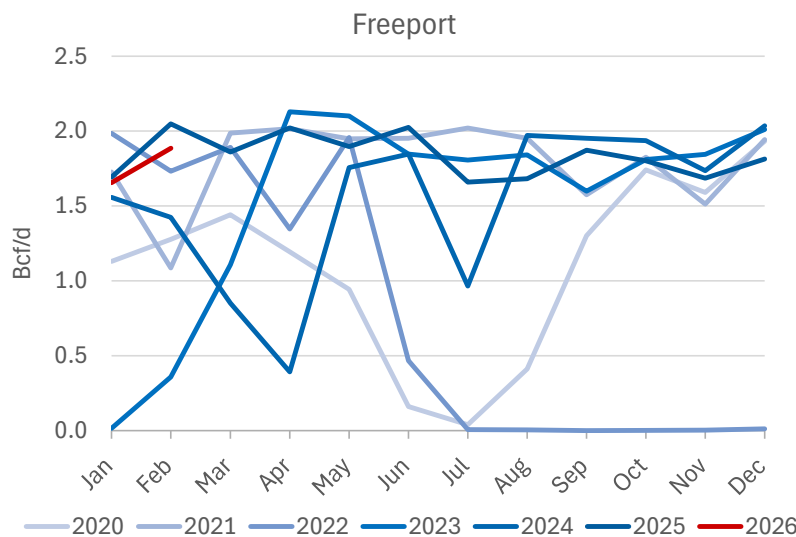
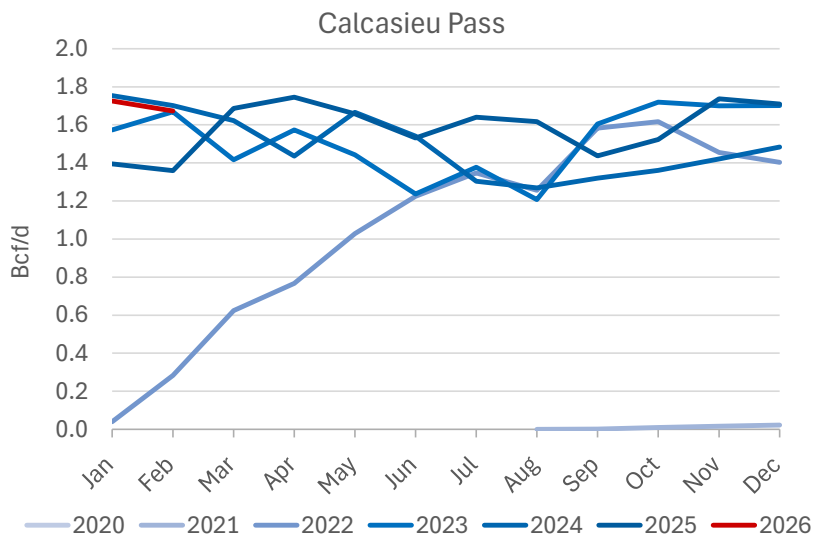
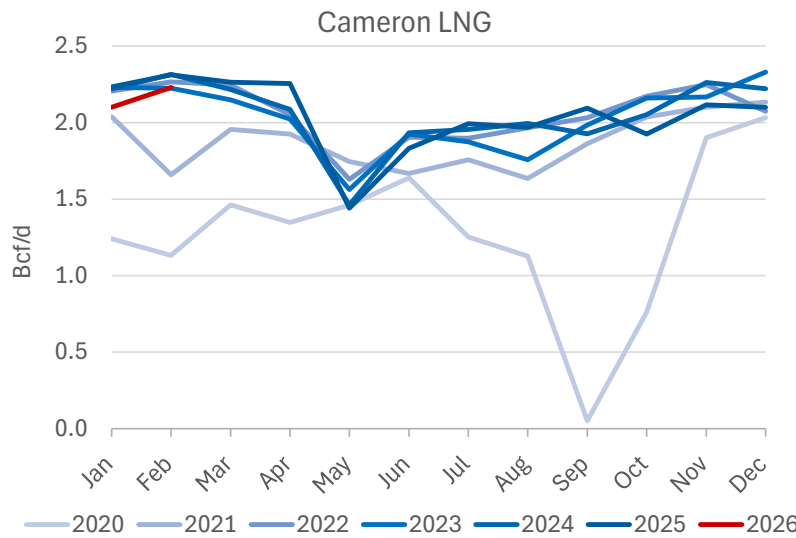
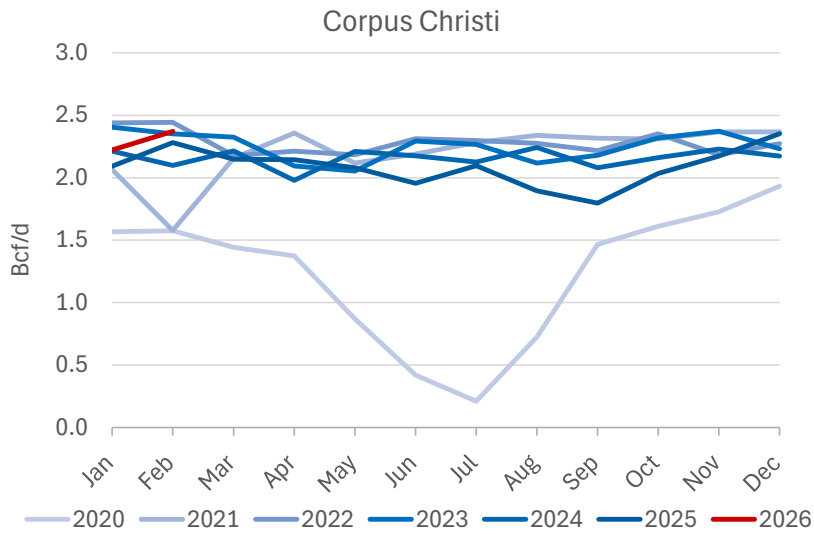
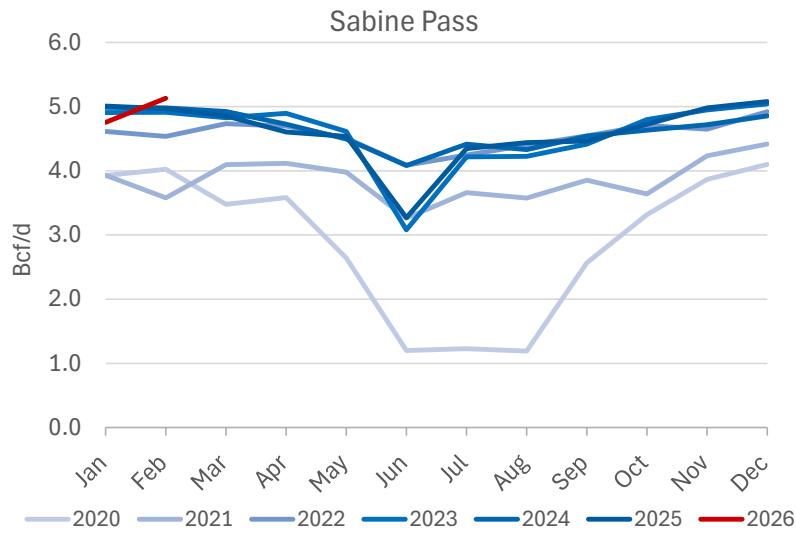


Note: Chart axis is truncated for visualization. Plaquemines prior year comparison exceeds chart axis.

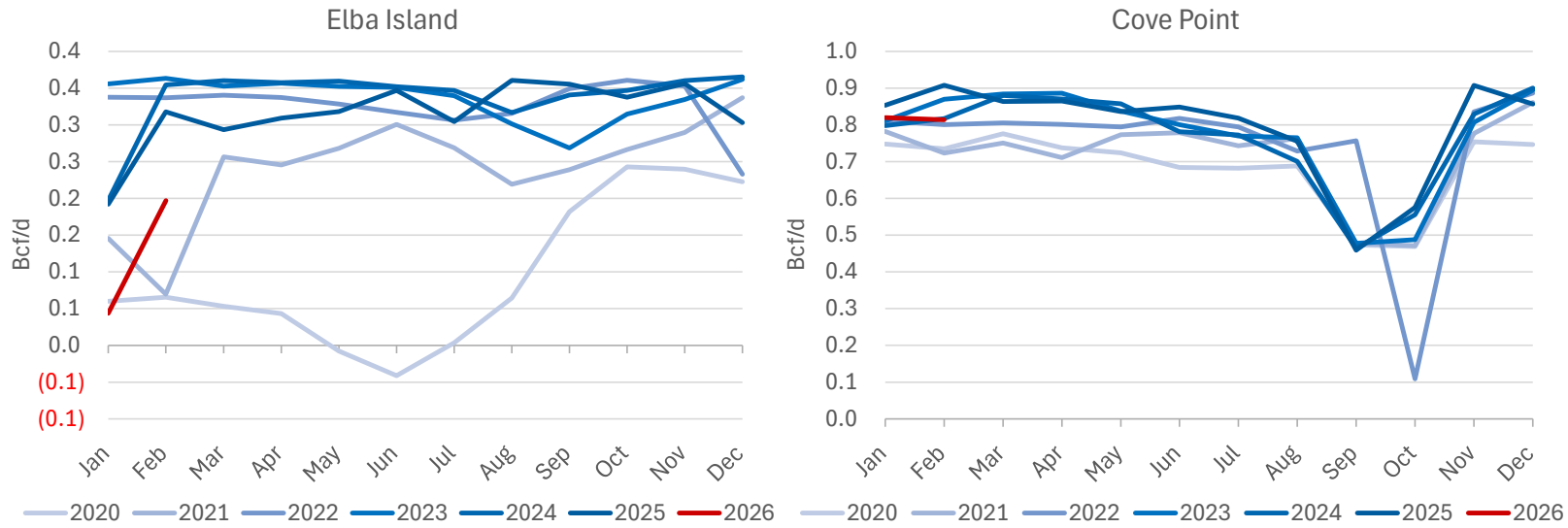
Daily LNG Feedgas Deliveries by Facility - Prior 3 Months



Monthly Average Feedgas Flows by Facility



Monthly Average Feedgas Flows by Facility



US LNG Facility Tracker

Project Status	Facility	Project Stage	Estimated ISD	Capacity Bcf/d
Under Construction	Corpus Christi Stage 3	Trains 1-7	2025	1.59
Under Construction	Corpus Christi Expansion	Trains 8-9	2029	0.40
Under Construction	CP2	CP2	2027	3.96
Under Construction	Golden Pass	Trains 1-3	2026-2027	2.58
Under Construction	Louisiana LNG	Trains 1-3	2029	2.33
Under Construction	Port Athur Phase 1	Trains 1-2	2027	1.91
Under Construction	Port Athur Phase 2	Trains 3-6	2030	1.91
Under Construction	Rio Grande	Train 1-5	2027-2031	3.95
Pending FID	Plaquemines Phase 2	Trains 1-36	2030	4.00
Pending FID	Alaska LNG		--	2.55
Pending FID	Commonwealth		2029	1.21
Pending FID	Delfin		--	1.80
Pending FID	Gulf LNG		--	1.53
Pending FID	Lake Charles		--	2.33
Pending FID	Texas LNG		--	0.56
Pending FID	Cameron	Train 4	--	--
Pending FID	Rio Grande	Trains 6-8	--	2.37
Proposed	Sabine	Trains 7-9	--	2.37
Proposed	ST LNG		2029	1.11
Permitting	Corpus Christ Stage 4	Trains 1-4	2030+	3.15